



Educational Access Scheme

For applicants whose studies were negatively affected as a result of circumstances beyond their control or choosing.





Key dates

To view a full list of UAC dates and check for changes go to uac.edu.au/key-dates.



Educational Access Scheme

2023		
September	29	Closing date for early bird applications for undergraduate admission: undergraduate application charge increases
November	23	Deadline to submit an Educational Access Scheme application (and documents) to: <ul style="list-style-type: none">■ guarantee receipt of your eligibility letter by Thursday 14 December 2023 and ensure you have time to change preferences for December Round 2■ have it considered in December Round 2 offers.
December	14	Starting date for progressive release of EAS eligibility letters
	26	Deadline for EAS applications and documents for consideration in January Round 1
2024		
February	2	Final closing date for EAS applications and documents for semester 1, 2024 admissions



Contents

<u>Educational Access Scheme</u>	2
<u>Disadvantages you can claim</u>	4
<u>Disrupted schooling</u>	4
<u>Financial hardship</u>	6
<u>Severe family disruption</u>	8
<u>Excessive family responsibilities</u>	12
<u>English language difficulty</u>	14
<u>Personal illness/disability</u>	16
<u>Refugee status</u>	17
<u>School environment</u>	19
<u>Participating institutions: 2023 to 2024</u>	21



Educational Access Scheme

To apply for EAS, you must be able to demonstrate that, as a result of circumstances beyond your control or choosing, your studies were negatively affected during:

- Year 11 and/or Year 12
- or
- the period in which you gained the qualifications you are using to seek admission to an undergraduate course.

If you are a current Year 12, disadvantages that occur after September are not eligible for EAS assessment, as they will not have had an impact on your Year 12 educational performance.

You must also be:

- a UAC undergraduate applicant
- an Australian citizen, a New Zealand citizen or a permanent resident of Australia (including a holder of an Australian permanent resident humanitarian visa). International students cannot apply for EAS.

Elite athletes and performers can apply for EAS but cannot apply for disadvantages caused by their sporting and/or performance commitments (eg being absent from school to train or compete or completing some or all studies by distance education due to training, practice and/or performance commitments). To have these commitments considered, contact the institution.

How EAS works

If you're considered under EAS and your ATAR is below the required selection rank for one or more of your course preferences, institutions can increase your selection rank for those courses and make you more competitive for a place. But you are not guaranteed a place: you still have to compete against other applicants.

We cannot specify how many points will be added to your selection rank, but some institutions publish details of their EAS equity adjustments on their websites.

Automatically-generated applications

We will automatically generate an EAS application for you (ie you don't have to submit an application) if:

- the residential address you enter in your UAC undergraduate application is identified by the Australian Bureau of Statistics as being in the lowest 25% of socio-economic disadvantage in Australia (no reassessment will occur after your undergraduate application is submitted)
- you currently attend a school considered rural, regional or remote.

In both these cases, we'll send you a confirmation email the day after you submit your undergraduate application.

To claim additional disadvantages, you still need to submit an EAS application, but you don't need to include details about the disadvantage covered by your automatically-generated application.

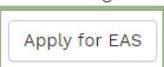
How to apply

Before starting your application, check the eligibility criteria and documents required for each EAS disadvantage: refer to [pages 4 to 19](#) in this booklet or go to uac.edu.au/eas.

- 1 From the UAC website, submit your undergraduate application.
- 2 Select 'Apply for EAS' on the undergraduate application confirmation page

Educational Access Scheme

Apply for EAS if you have experienced long-term educational disadvantage.



or log in to your completed undergraduate application and select 'EAS'.



- 3 Open the category of disadvantage you wish to claim. Select the specific disadvantages that apply to you and answer the follow-up questions. When you have selected all the relevant disadvantages in that category, click 'Save'. Repeat for each category you wish to claim.
- 4 Acknowledge the alerts to upload documents.
- 5 Agree to the declaration and authority and submit your EAS application.
- 6 Download your confirmation of application and the document package for each of your claimed disadvantages. The document package details the eligibility criteria for the disadvantage and lists the supporting documents you need to provide.
- 7 Upload all your supporting documents to your application at least 10 working days before the undergraduate offer round in which you wish to be considered (or as advised in the key dates on the [UAC website](#)).

Your application can't be assessed until your supporting documents have been uploaded.



Commonly required documents

Applicant statement

Complete the applicant statement in your own words. Provide all the factual details requested while being as precise and specific as possible.

Educational impact statement

An educational impact statement must be written by a responsible person (eg school principal, counsellor, year adviser, careers adviser) who can comment on the impact of your disadvantage on your education.

Medical impact statement

If you're asked to provide a medical impact statement, it must:

- be completed by a registered health professional who is treating your medical condition/disability
- not be completed by the same person who completed the educational impact statement.

Documents not in English

You must supply a copy of:

- the document in the original language
- an English translation of the document.

Your documents must be translated by:

- Multicultural NSW (visit multicultural.nsw.gov.au) or
- a translator accredited by the National Accreditation Authority for Translators and Interpreters (NAATI). A list of NAATI-accredited translators in Australia and some overseas locations is available at naati.com.au or email infonsw@naati.com.au. Note that NAATI itself does not offer translation services.

If you do not provide the required documents, your claim may not be assessed. For detailed document requirements, go to uac.edu.au/eas-applications.

Disadvantages you can claim

and the documents you will need to provide

To research EAS disadvantages go to uac.edu.au/eas-disadvantage.

| Disrupted schooling

D01A: Attended three or more different secondary schools during Years 10, 11 and 12	
Eligibility criteria	You attended three or more different secondary schools in Australia during Years 10, 11 and 12 or equivalent. Note: Eligibility does not include moving from junior high school to senior high school, attendance at an intensive language centre/s, or schools attended as part of an exchange program.
Applicant statement requirements	<ul style="list-style-type: none"> ■ Details of the secondary schools you attended during Years 10, 11 and 12 or equivalent and the period you attended each school. ■ Reason/s why you changed schools.
Educational impact statement required?	No.
Supporting documentation required	A record of attendance from each secondary school you attended during Years 10, 11 and 12 or equivalent. The record of attendance must be issued on the school letterhead, be signed by the principal or another senior person at your school and confirm the period you attended the school. It is not a record of absences.

D01B: Moved to Australia after the beginning of Year 11 + English is your first language	
Eligibility criteria	You started school in Australia during Year 11 and/or Year 12 or equivalent and English is your first language.
Applicant statement requirements	<ul style="list-style-type: none"> ■ Details of the date you arrived in Australia. ■ Details of the school/s you attended, and the periods attended. ■ The country in which you undertook your secondary education before coming to Australia.
Educational impact statement required?	No.
Supporting documentation required	<ul style="list-style-type: none"> ■ A copy of your passport indicating date of entry to Australia or an international movement record from the Department of Home Affairs. ■ A record of attendance from each secondary school you attended during Year 11 and/or Year 12 or equivalent. The record of attendance must be issued on the school letterhead, be signed by the principal or another senior person at your school, and confirm the period you attended the school. It is not a record of absences.

D01C: Moved interstate after the beginning of Year 11

Eligibility criteria	You moved interstate during Year 11 and/or Year 12 or equivalent.
Applicant statement requirements	<ul style="list-style-type: none"> ■ Details of the secondary schools you attended since the beginning of Year 10 (school, state/territory and period attended) ■ Reason/s why you moved interstate.
Educational impact statement required?	No.
Supporting documentation required	A record of attendance from each school you attended during Years 10, 11 and 12 or equivalent. The record of attendance must be issued on the school letterhead, be signed by the principal or another senior person at your school and confirm the period you attended the school. It is not a record of absences.

S01D: Studying any Year 12 subjects through distance education, an Access program or School of Now

Eligibility criteria	<p>You're studying any of your Year 12 courses through a secondary distance education centre, an Access program or School of Now as a result of circumstances beyond your control or choosing; for example, the Year 12 course you have chosen is not provided by the secondary school you are attending and you have to study it online via a distance education provider.</p> <p>You are not eligible if you undertook distance education of your own volition for whatever reason, including elite sports or any other vocational reason, or overseas travel.</p> <p>Note: You are eligible for S01D if you are undertaking HSC (or equivalent) courses via TAFE Digital. You are not eligible for S01D if you are attending face-to-face classes (ie not distance education) at a Community College, Saturday school, TAFE or other equivalent provider, even if the course is not offered by your school.</p>
Applicant statement requirements	<ul style="list-style-type: none"> ■ Details of your HSC program and how you're studying (eg at school, by distance education or through an Access program or School of Now). ■ The reason/s for your enrolment in HSC courses by distance education or through an Access program or School of Now.
Educational impact statement required?	Yes. The educational impact statement must confirm you are studying courses through a secondary distance education centre or an Access program or School of Now as a result of circumstances beyond your control or choosing. If you don't provide an educational impact statement confirming this, you will be assessed as ineligible for this disadvantage code.
Optional supporting documentation	<p>Your Confirmation of Entry from NESA for the HSC</p> <p>or</p> <p>A letter from the distance education centre, Access program or School of Now confirming your enrolment and the courses you are undertaking.</p>

Financial hardship

You should claim all disadvantages under the financial hardship category for which you are eligible. You cannot claim F01C if you are eligible for F01A or F01B.

F01A: Receiving Youth Allowance, Austudy or ABSTUDY F01B: Receiving other Centrelink means-tested benefits	
Eligibility criteria	<p>You received</p> <ul style="list-style-type: none"> ■ Youth Allowance, Austudy or ABSTUDY during Year 11 and/or Year 12 or equivalent (F01A) <p>or</p> <ul style="list-style-type: none"> ■ another Centrelink income and asset-tested entitlement such as the Disability Support Pension (F01B). <p>for a period of at least three months during Year 11 and/or Year 12 or equivalent</p> <p>Note: This does not include Family Tax Benefit payments – refer to disadvantage F01D.</p>
Applicant statement requirements	No statement required.
Educational impact statement required?	No.
Supporting documentation required	<p>If you're currently receiving a Centrelink payment, enter your Centrelink Customer Reference Number (CRN) in the EAS application. UAC will verify your payments directly with Centrelink.</p> <p>If you're not currently receiving a Centrelink payment, but did so during Years 11 and/or Year 12 or equivalent, attach a copy of your most recent Centrelink income statement. The documentation must be in your name.</p> <p>Your CRN is on all Centrelink income statements and Health Care Cards. Your CRN isn't the same as your Centrelink Customer Access Number (CAN). Contact Centrelink to obtain your CRN if you're unsure.</p> <p>This number must be allocated to you and not to your partner, parent or guardian. If the CRN provided has not been allocated specifically to you, Centrelink will not release the required information to UAC and your claim will be assessed as ineligible.</p>

F01C: Exceptional financial hardship

Eligibility criteria	<p>You experienced exceptional financial hardship during Year 11 and/or Year 12 or equivalent.</p> <p>Note: F01C is for a small number of applicants who experience exceptional financial hardship but who are not in receipt of Centrelink benefits. This generally doesn't include applicants whose family income is above the threshold for eligibility for a Centrelink (or other income and asset-tested) entitlement.</p>
Applicant statement requirements	<ul style="list-style-type: none"> ■ Why you're not currently eligible for a Centrelink income and asset-tested entitlement ■ A description of the exceptional financial hardship you've experienced. ■ The period of the exceptional financial hardship.
Educational impact statement required?	Yes.
Supporting documentation required	<p>Documents to show your complete financial picture. These may include:</p> <ul style="list-style-type: none"> ■ an ATO Notice of Financial Assessment for the last financial year and copies of pay slips for the last two months ■ a copy of a Health Care Card ■ a copy of a statement with details of any Centrelink income and asset-tested entitlement you're receiving (this may include Family Tax Benefit A) ■ any other documents to demonstrate your exceptional financial hardship. <p>If you're living with your parent/s (or with a partner) and you're being financially supported, you must also provide evidence of your parent/s or partner's income (eg an ATO Notice of Financial Assessment for the last financial year).</p> <p>If you're being financially supported by your parent/s (whether you're living with them or not), they must also prepare a statement which states that they're supporting you. In the statement they must also provide details of any other dependent children, including their ages and whether or not they are tertiary students living at or away from home.</p>

F01D: Receiving Family Tax Benefit Part A

Eligibility criteria	Your parent/s or guardian/s received Family Tax Benefit Part A during Year 11 and/or Year 12 or equivalent.
Applicant statement requirements	No statement required.
Educational impact statement required?	No.
Supporting documentation required	<ul style="list-style-type: none"> ■ A Centrelink income statement issued to your parent/s or guardian/s demonstrating their receipt of Family Tax Benefit Part A, or ■ A Centrelink family assistance letter that has been issued to your parent/s or guardian/s demonstrating their receipt of Family Tax Benefit Part A. <p>! Important information</p> <p>The Centrelink income statement or family assistance letter must be dated within the period of your Year 11 and/or Year 12 or equivalent.</p> <p>Your parent/s or guardian/s can view and download their Centrelink income statement by logging in to their Centrelink online account, or myGov if they have set up an account. To obtain a Centrelink family assistance letter your parent/s or guardian/s must call or visit a Centrelink office; you will need to allow at least a week for Centrelink to issue the letter.</p> <p>Note: If your surname or residential address is different from your parent/guardian's, upload a copy of your birth certificate or other document(s) that verify your relationship.</p>

| Severe family disruption

H01A: Death of an immediate family member/close friend	
Eligibility criteria	Your home environment was severely disrupted due to the death of an immediate family member or close friend during Year 11 and/or Year 12 or equivalent. Note: If the deceased suffered a long-term illness/disability, you may also claim under disadvantage H01B if eligible.
Applicant statement requirements	<ul style="list-style-type: none"> ■ The date of death. ■ The nature of your relationship with the deceased. ■ The effect on your home environment and you personally. ■ The effect on your educational performance.
Educational impact statement required?	Yes.
Supporting documentation required	A copy of the death certificate or funeral notice.

H01B: Life-threatening/severe illness of an immediate family member/close friend	
Eligibility criteria	Your home environment was severely disrupted due to the severe or life-threatening illness/disability of an immediate family member or close friend during Year 11 and/or Year 12 or equivalent.
Applicant statement requirements	<ul style="list-style-type: none"> ■ The nature of your relationship to the person with the illness/disability. ■ The duration of the illness/disability and the school years involved. ■ The effect on your home environment and you personally.
Educational impact statement required?	Yes.
Optional supporting documentation	A medical certificate/report giving full details of the length of illness and its severity. Include information about treatment, medication, hospitalisation.

H01C: Separation of parents or applicant

Eligibility criteria	<p>Your home environment was severely disrupted due to the relationship breakdown and separation of your parents during Year 11 and/or Year 12 or equivalent or</p> <p>You (the applicant) experienced separation due to relationship breakdown.</p> <p>Note: Applicants who provide evidence of the legal finalisation of a divorce during Year 11 and/or Year 12 or equivalent will not be given consideration where there is no evidence of disruption to the home environment.</p> <p>In cases where the separation has caused ongoing criminal/legal matters, applicants are encouraged to also claim H01D. In cases of separation where ongoing abuse or assault has occurred, applicants are encouraged to also claim H04A or P01A.</p>
Applicant statement requirements	<ul style="list-style-type: none"> ■ Details of the period of family upheaval, including its duration and the school years involved. ■ The date of separation. ■ The effect on your home environment and you personally.
Educational impact statement required?	Yes. It must verify the date of separation and how the separation has affected your studies.
Optional supporting documentation	Copies of any appropriate supporting documents, such as those relating to any associated legal proceedings (eg Apprehended Violence Order, Police Record of Interview, police reports, court orders, witness subpoenas).

H01D: Criminal/legal matters for offences not committed by applicant

Eligibility criteria	<p>Your home environment was severely disrupted due to criminal/legal matters during Year 11 and/or Year 12 or equivalent.</p> <p>Criminal/legal matters may include coronial inquiries, medical tribunals or police investigations.</p> <p>Note: You cannot claim disadvantage for offences for which you've been convicted, or for investigations or legal proceedings against you which have not yet been resolved. You cannot claim for minor issues such as traffic/parking infringements.</p>
Applicant statement requirements	<ul style="list-style-type: none"> ■ Details of the type of criminal/legal matters, the duration of the matters and who the matters involved. ■ The effect on your home environment and you personally.
Educational impact statement required?	Yes.
Optional supporting documentation	A copy of documents relating to the criminal/legal matters (eg police fact sheets, bail undertakings, coronial inquiries, medical tribunals, police investigations).

H04A: Abuse of applicant, parents or sisters/brothers

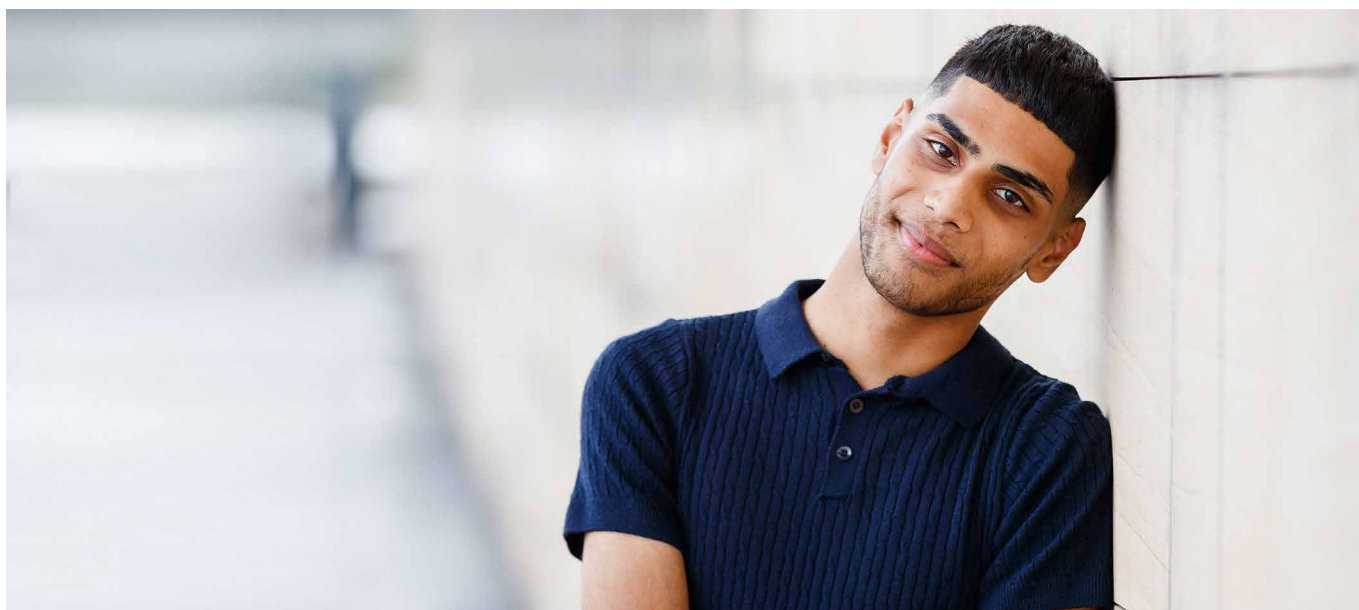
Eligibility criteria	<p>You, or your parents, or any of your siblings have experienced severe abuse during Year 11 and/or Year 12 or equivalent.</p> <p>This could include extreme physical or verbal torment at school or in the home environment.</p> <p>Note: You cannot claim for isolated or trivial instances that may have caused you offence.</p>
Applicant statement requirements	<p>Applicant statement is optional. We are able to assess based on other evidence provided. If you do provide an applicant statement, include the following information:</p> <ul style="list-style-type: none"> ■ details of the abusive situation including duration of the abuse and the school years involved ■ details of any absences from school because of the abusive situation ■ the effect on your home environment and you personally.
Educational impact statement required?	Yes.
Optional supporting documentation	<ul style="list-style-type: none"> ■ Medical certificates/reports giving details of the abuse, its duration and severity, including any treatment, medication and/or hospitalisation. ■ A letter from your school providing details of any absences from school and/or disruption to your learning. The document must be on the school letterhead and must be signed by the principal or another senior person at the school. ■ A copy of any legal proceedings (eg Apprehended Violence Order, Police Record of Interview), if appropriate. ■ A medical certificate/report giving full details of the length of illness and its severity. Include information about treatment, medication, hospitalisation.

H04B: Out-of-home care status

Eligibility criteria	<p>You are currently placed, or have previously been placed, with an out-of-home care (OOHC) provider due to government agency intervention. This includes:</p> <ul style="list-style-type: none"> ■ authorised and supported kinship care arrangements ■ short-term, long-term or foster care provided by a government and/or non-government organisation ■ cases where adoption has taken place after an initial period of OOHC.
Applicant statement requirements	No statement required.
Educational impact statement required?	No.
Supporting documentation required	<p>At least one of the following:</p> <ul style="list-style-type: none"> ■ A letter from your government or non-government organisation caseworker. The letter must: <ul style="list-style-type: none"> – be written on appropriate letterhead – include the name and date of birth of the applicant (young person) – include the date of removal – be signed and indicate the position of the author. ■ A current copy of placement papers from a Children's Court.

N01D: Natural disasters

Eligibility criteria	<p>Your education has been negatively impacted during Year 11 and/or 12 or equivalent due to the impact of a natural disaster. Natural disasters in Australia can include, but are not limited to, heatwaves, bushfires, droughts, floods, severe storms and tropical cyclones, earthquakes, tsunamis and landslides. (healthdirect.gov.au)</p> <p>COVID-19 school shutdowns, home education and absences due to illness are not covered by this disadvantage.</p>
Applicant statement requirements	<ul style="list-style-type: none">■ Details of the natural disaster, the duration of its impact and the school years involved.■ The effect on your home environment and you personally.
Educational impact statement required?	Required only if no government payments have been received.
Supporting documentation required	<p>Evidence of any disaster relief payments or other payments from a state or federal government body related to the specific natural disaster. These can be payments to:</p> <ul style="list-style-type: none">■ you, the applicant, or■ your parent/s (or guardian/s). In this case, the address to which the payment has been made must match the address in your application. <p>If none of the above payments have been received, you must prove the educational impact of the natural disaster to the same level as applicants who received payments. This evidence can be in the form of:</p> <ul style="list-style-type: none">■ insurance documents■ socio-economic status reports■ bank documents■ government documents.



Excessive family responsibilities

H03A: Excessive responsibility for care of children/other family members	
Eligibility criteria	You've had excessive responsibility for care of children and/or other family members during Year 11 and/or Year 12 or equivalent. The care you have been providing has been necessary (eg due to a medical condition, serious injury/illness or circumstance in which the individual requires regular support and assistance) and you have not been paid a wage or salary for the purpose of caring.
Applicant statement requirements	<ul style="list-style-type: none"> ■ Details of who you care for and why you're required to provide care. ■ The number of hours these responsibilities take each week. ■ The period you've had these responsibilities and the school years involved. ■ Details of support you've received from friends, family, neighbours or an agency. ■ Details of the number and ages of residents in the household. ■ Details of the illness or infirmity of any household members. ■ The effect on your home environment and you personally.
Educational impact statement required?	Yes.
Optional supporting documentation	Medical certificates/reports confirming the medical condition/disability of any family members, giving full details of the length of illness and its severity.

H03B: Required to work to support family or self	
Eligibility criteria	You've had excessive work requirements during Year 11 and/or Year 12 or equivalent for at least one of the following reasons: <ul style="list-style-type: none"> ■ supporting yourself, while living independently ■ supporting your family ■ responsibility to work in the family business.
Applicant statement requirements	<ul style="list-style-type: none"> ■ The reason/s you have to work. ■ The number of hours you work each week. ■ The type of work you do. ■ The period you've had these responsibilities and the school years involved. ■ The effect on your home environment and you personally.
Educational impact statement required?	Yes.
Supporting documentation required	<ul style="list-style-type: none"> ■ A statement of service from your employer/s on the company letterhead. The statement/s of service must include: <ul style="list-style-type: none"> – your job title – period of employment including start date (and end date if no longer employed) – average number of hours worked per week. ■ If you work in a family business, provide independent verification of your work requirements (eg business accountant).
Optional supporting documentation	Additional statements from a responsible person/people (eg doctor, lawyer, social worker, religious or community leader). The responsible person/people must be aware of your need to work and be able to explain how this has impacted on your educational performance.

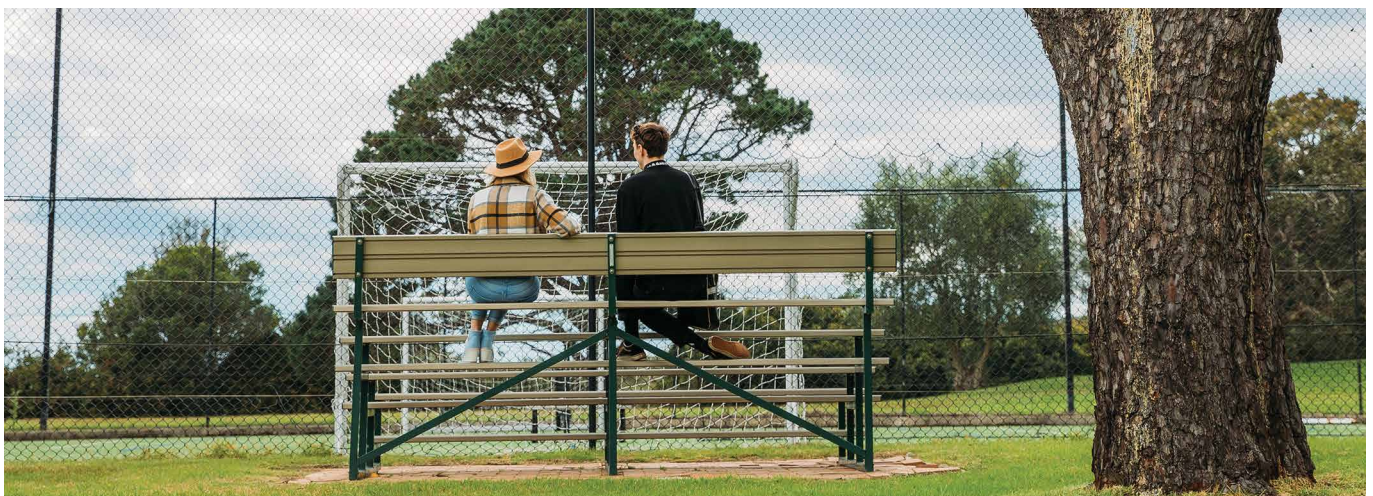
H03C: Excessive responsibility for care of self with no family support

Eligibility criteria	You've had excessive responsibility for the care of yourself, while living independently, with no family or partner support, during Year 11 and/or Year 12 or equivalent.
Applicant statement requirements	<ul style="list-style-type: none">■ Details of why you're required to care for yourself, the period you've had this responsibility and the school years involved.■ Details of any support you receive from friends, family, neighbours or an agency.■ Details of your accommodation.■ Details of your income and any other means of support, if relevant.■ If relevant, details of your employment status.■ The effect on your home environment and you personally.
Educational impact statement required?	Yes.
Optional supporting documentation	<ul style="list-style-type: none">■ Documentation substantiating:<ul style="list-style-type: none">– your independent residential status (eg lease documents, crisis accommodation)– your employment status if relevant– all sources of income and other means of support.■ Any Centrelink documents confirming 'Unreasonable to live at home' status.■ Documents relating to criminal/legal matters (eg police fact sheets, bail undertakings, coronial inquiries/inquests, medical tribunals, police investigations).



English language difficulty

L01A: ESL/started school in Australia in Year 11 or Year 12 (current Australian Year 12 applicants only)	
Eligibility criteria	<p>All of the following:</p> <ul style="list-style-type: none"> ■ you are a current Australian Year 12 applicant ■ you experience difficulty with the English language ■ you came directly to Australia from a non-English speaking country ■ you began your education in an Australian school in Year 11 and/or Year 12 or equivalent.
Applicant statement requirements	<ul style="list-style-type: none"> ■ The country and the language in which you undertook your secondary education before coming to Australia. ■ Details of English as a Second Language (ESL) support that you receive (eg at school or outside of school, hours per week, the period you've been receiving this support).
Educational impact statement required?	Yes.
Supporting documentation required	If you attended an Intensive English Centre, an IEC record of attendance.
Optional supporting documentation	<ul style="list-style-type: none"> ■ Copies of your school reports for your secondary education studies undertaken before coming to Australia. These documents must be translated into English. For more information about document translation, go to uac.edu.au/eas-applications. ■ International movement records from the Department of Home Affairs. ■ A notification confirming your date of first arrival in Australia on the letterhead of the Department of Home Affairs. <p>(Note: Providing an Immi Card or visa grant letter with no other documents is not enough for assessment. UAC must be able to identify your date of entry into Australia.)</p>



L01B: ESL/started school in Australia in Years 7 to 10 (current Australian Year 12 applicants only)

Eligibility criteria	<p>All of the following:</p> <ul style="list-style-type: none"> ■ You are a current Australian Year 12 applicant. ■ You experience difficulty with the English language. ■ You came directly to Australia from a non-English speaking country. ■ You began your education in an Australian school during Years 7 to 10.
Applicant statement requirements	The country and the language in which you undertook your education before coming to Australia.
Educational impact statement required?	Yes.
Supporting documentation required	If you attended an Intensive English Centre, an IEC record of attendance.
Optional supporting documentation	<ul style="list-style-type: none"> ■ Copies of your school reports for any secondary studies undertaken before you arrived in Australia. ■ International movement records from the Department of Home Affairs. ■ A notification confirming your date of first arrival in Australia on the letterhead of the Department of Home Affairs. <p>(Note: Providing an Immi Card or visa grant letter with no other documents is not enough for assessment. UAC must be able to identify your date of entry into Australia.)</p>

L01C: ESL/entered Australia in 2019 or later (post-school applicant)

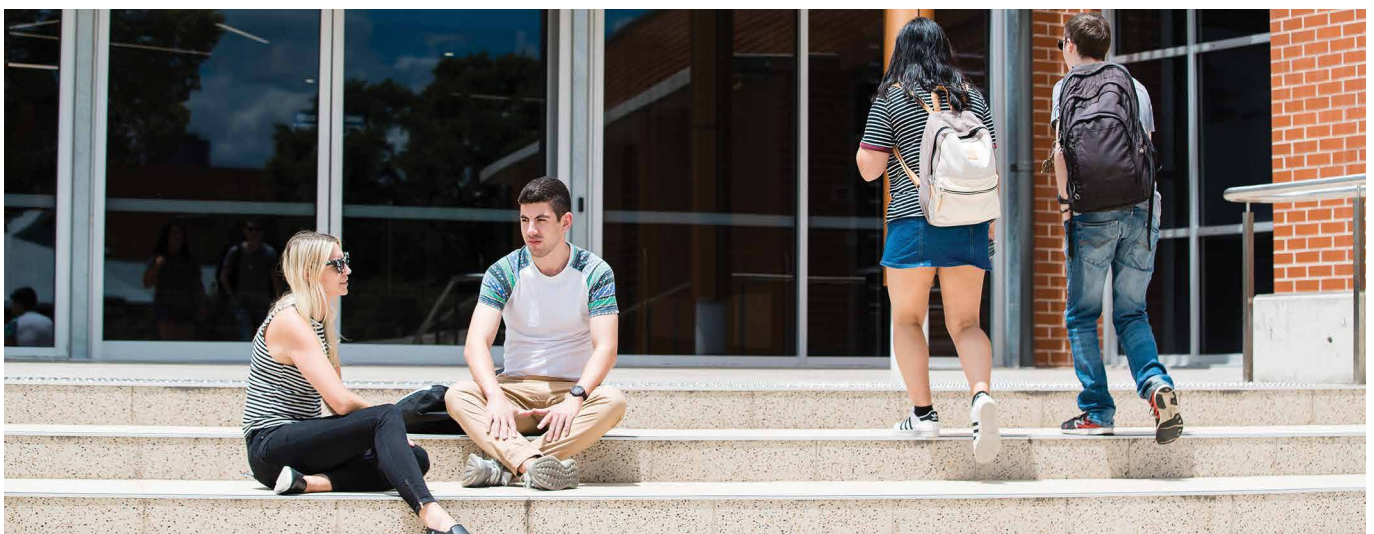
Eligibility criteria	<p>All of the following:</p> <ul style="list-style-type: none"> ■ You are a non-Year 12 applicant. ■ You experience difficulty with the English language. ■ You came directly to Australia from a non-English speaking country in 2019 or after. ■ Before your arrival you didn't undertake any formal education at an institution where the language of instruction was English.
Applicant statement requirements	<ul style="list-style-type: none"> ■ The date you immigrated to Australia. ■ Details of your studies before and after you arrived in Australia (include years studied, name of studies, name of institution, country, language of instruction, studies completed or not, equivalent full-time years enrolled).
Educational impact statement required?	No.
Supporting documentation required	<ul style="list-style-type: none"> ■ Documentary evidence of any studies undertaken before you arrived in Australia. ■ Documentary evidence of any studies undertaken in Australia. ■ If you attended an Intensive English Centre, an IEC record of attendance. ■ International movement records from the Department of Home Affairs, or a notification confirming your date of first arrival in Australia, on the letterhead of the Department of Home Affairs. <p>(Note: Providing an Immi Card or visa grant letter with no other documents is not enough for assessment. UAC must be able to identify your date of entry into Australia.)</p>

Personal illness/disability

P01A: Disability or long-term medical condition	
Eligibility criteria	<p>During Year 11 and/or Year 12 or equivalent you experienced:</p> <ul style="list-style-type: none"> ■ a severe and long-term or a severe and recurrent medical/psychiatric condition or disability <p>or</p> <ul style="list-style-type: none"> ■ a learning, sensory, physical, psychological or other disability/disorder. <p>Applicants who have not sought and utilised recommended options (made by a registered health professional) for their condition, disability, illness or disorder, may not be assessed as eligible for P01A.</p> <p>You're not eligible if you've suffered a series of minor illnesses, have an ongoing minor medical condition stabilised by medication or if you become ill or suffer a condition that affects your examination performance only. You're also not eligible if the only impact on you is ongoing rehabilitation or treatment of less than two hours per week.</p>
Applicant statement requirements	<ul style="list-style-type: none"> ■ Details of your medical condition/disability in the period you've had your medical condition/disability and the school years involved. ■ Details of treatment you have received for your medical condition/disability.
Educational impact statement required?	Depends on other documentation provided: see 'Supporting documentation required' below.
Supporting documentation required	<p>Applicants with a NESA disability provisions notification (or similar documentation from an equivalent interstate curriculum and assessment authority or the IB):</p> <ul style="list-style-type: none"> ■ the NESA (or equivalent authority) disability provisions notification ■ the supporting medical documentation you submitted to NESA (or equivalent authority) ■ an applicant statement (see above for the information required) <p>Applicants without a NESA (or equivalent authority) disability provisions notification:</p> <ul style="list-style-type: none"> ■ a medical impact statement ■ an educational impact statement ■ medical certificates/reports relating to the medical condition you have claimed (optional) ■ an applicant statement (see above for the information required).
Additional requirements for applicants with learning disabilities	<p>Applicant statement requirements:</p> <ul style="list-style-type: none"> ■ If you have not applied for disability provisions by NESA (or equivalent authority), you must explain why. <p>Supporting documentation required:</p> <ul style="list-style-type: none"> ■ If you have been granted disability provisions by NESA (or equivalent authority), a copy of the disability provisions notification along with copies of any documentation submitted to NESA (or equivalent authority) <p>or</p> <ul style="list-style-type: none"> ■ If you have not been granted disability provisions by NESA (or equivalent authority), provide evidence of clinical assessments conducted by a qualified professional such as an educational or neuropsychologist or learning disability specialist using recognised valid, reliable and standardised tests. These must have been undertaken within the last three years.

Refugee status

R01A: Refugee status	
Eligibility criteria	<p>You are, or have previously been, the holder of one of the following Australian refugee visas:</p> <ul style="list-style-type: none"> ■ Global Special Humanitarian (subclass 202) ■ Refugee visas (subclass 200, 201, 203 and 204) ■ Humanitarian Stay (subclass 449) ■ Temporary Protection visa (subclass 785) ■ Temporary Humanitarian Concern visa (subclass 786) ■ Safe Haven Enterprise visa (subclass 790) ■ Protection visa (subclass 866) ■ Resolution of Status visa (subclass 851)
Applicant statement requirements	No statement required.
Educational impact statement required?	No.
Supporting documentation required	<p>At least one of the following documents confirming your refugee status:</p> <ul style="list-style-type: none"> ■ your Australian Refugee or Humanitarian visa, showing the relevant visa subclass (eg subclass 202) ■ your United Nations High Commissioner for Refugees (UNHCR) registration, showing the relevant visa subclass ■ your Red Cross document for travel to Australia, showing the relevant visa subclass <p>(Note: Providing an Immi Card or visa grant letter with no other documents is not enough for assessment. UAC must be able to identify your date of entry into Australia.)</p>





| School environment

Read page 3 for information about automatically-generated applications

S01R: Australian rural, regional or remote school	
Eligibility criteria	<p>You attended an Australian rural, regional or remote school during Year 11 and/or Year 12. A school is classified as an Australian rural, regional or remote school if identified as inner regional, outer regional, remote or very remote according to the Australian Bureau of Statistics (ABS) Australian Statistical Geography Standard – Remoteness Area (ASGS-RA).</p> <p>Eligibility is based on this standard; not your residential address.</p> <p>Current Year 12 students</p> <p>If you are completing Year 12 at a regional, rural and/or remote school, UAC will automatically generate an ‘electronic’ application for you. You will receive an email notification of this within 24 hours of submitting your undergraduate application. If you receive this notification, do not claim this disadvantage in your EAS application.</p> <p>Only claim this disadvantage manually in your EAS application if you attended a regional, rural and/or remote school during Year 11 and/or Year 12 and have since transferred to a school in a metropolitan area. You will need to provide supporting documents.</p> <p>Other applicants</p> <p>Claim this disadvantage in your EAS application if you attended a regional, rural and/or remote school during Year 11 and/or Year 12. You will need to provide supporting documents.</p>
Applicant statement requirements	<ul style="list-style-type: none"> ■ The name of your school. ■ The period you attended the school.
Educational impact statement required?	No.
Supporting documentation required	A record of attendance from your school. The record of attendance must be issued on the school letterhead, be signed by the principal or another senior person at your school, and confirm the period you attended the school. It is not a record of absences.

Questions? Send an email to equity@uac.edu.au.

Please provide your EAS application number and full name in all email enquiries.

Application fee

There is no fee to apply for the Educational Access Scheme, Schools Recommendation Scheme or Equity Scholarships, but there is a fee to apply for undergraduate admission through UAC. The undergraduate application fee will increase at 11.59pm on Friday 29 September 2023.

Your email address

UAC will email you about your application, so you must provide a private (ie not school-based), up-to-date email address when you apply. To prevent emails from UAC reaching your junk folder, add the domain uac.edu.au to your list of safe email contacts.

It is your responsibility to check your emails regularly (including your junk emails) for any messages from UAC.

Support for applicants with a disability

If you have a disability and are having problems with the UAC application process, call us on (+61 2) 9752 0200 between 8.30am and 4.30pm (Sydney time) Monday to Friday or email us using the enquiry form at uac.edu.au/contact.

We will help you with your application.

Confidentiality

All information provided by applicants is treated as confidential according to UAC's Privacy Policy and institution privacy statements. Only authorised personnel at UAC and/or institutions will have access to your application.

Your personal information can only be released to a third party in special circumstances, such as where the law requires it, or where you give permission.

All UAC applications require you to declare that the information you provide is true and complete and to authorise UAC to use your information for specific purposes.

Read UAC's Privacy Policy and application declarations at uac.edu.au/privacy.

Participating institutions: 2023 to 2024

	Equity Scholarships	Educational Access Scheme	Schools Recommendation Scheme
AIE Institute			✓
Australian Catholic University	✓	✓	✓
Australian College of Applied Professions			
Australian College of Physical Education		✓	✓
Australian National University	✓	✓	
Charles Darwin University			
Charles Sturt University	✓	✓	✓
CQUniversity		✓	
Griffith University		✓	
International College of Management, Sydney	✓	✓	✓
La Trobe University		✓	
Macquarie University	✓	✓	✓
MIT Sydney			
National Art School			✓
SAE Creative Media Institute			✓
SIBT			
Southern Cross University	✓	✓	
Torrens University Australia	✓	✓	✓
University of Canberra		✓	✓
University of New England	✓	✓	✓
University of Newcastle		✓	✓
University of Notre Dame Australia		✓	✓
University of Sydney	✓	✓	
University of Technology Sydney	✓	✓	✓
University of Wollongong	✓	✓	
UNSW Canberra at ADFA	✓	✓	
UNSW Sydney	✓	✓	
Western Sydney University	✓	✓	✓

Details of participating institutions are correct as at April 2023. Check the [UAC website](#) for updates.

ACCESS YOUR POTENTIAL.

Universities Admissions Centre
(NSW & ACT) Pty Ltd


ABN 19 070 055 935
ACN 070 055 935

 (+61 2) 9752 0200

 uac.edu.au

 [uacinfo](https://www.facebook.com/uacinfo)

 [uacinfo](https://www.instagram.com/uacinfo)

 [uacdigital](https://www.youtube.com/uacdigital)

 [uacapply](https://www.tiktok.com/uacapply)

UAC