

## Need money for Uni?



### Does the cost of uni stop students from applying?

Students from a low socio-economic background, who need help with higher education and accommodation costs, may be eligible for an Equity Scholarship.

Equity Scholarships are **not** based on academic merit. Equity Scholarships aim to facilitate participation in higher education by students who are financially disadvantaged, especially those from rural and regional areas.

There are different types of Equity Scholarships, but they fall into two main categories:

#### Commonwealth Learning Scholarships (CLS), established by the Australian government.

There are two types of CLS:

- Commonwealth Education Costs Scholarships (CECS) to help with general education costs, valued at \$2 080 pa in 2006 for up to four years (indexed annually), and
- Commonwealth Accommodation Scholarships (CAS) to help with accommodation costs, valued at

\$4 161 pa in 2006 for up to four years (indexed annually).

#### Institution Equity Scholarships (IES), established by individual institutions.

Institutions fund their own scholarship schemes for students who are from a low socio-economic background and who may also be experiencing other forms of educational disadvantage. The value and duration of IES vary between institutions.

Last year IES ranged from \$250 to \$5 000 pa for up to five years and included one-off bursaries, book bursaries, course-specific scholarships, and scholarships for Indigenous applicants.

UAC processes CLS applications for **all** NSW and ACT institutions and IES for **most** NSW and ACT institutions. One UAC application form covers both CLS and IES for participating institutions.

For 2006 admissions, UAC assessed 5 621 Equity Scholarships applications. Some metropolitan institutions were unable to

*contents*

**PAGE 01** Need money for uni?  
What's new in the Guide?

**PAGE 02** Study costs  
New procedures for international applicants

**PAGE 03** Univeristy news & updates

**PAGE 04** Artistic ambition  
UAC school kits  
Important dates for 2007 admissions

award all their CAS due to an insufficient number of eligible applicants from rural and regional areas.

#### Further information on Equity Scholarships

Copies of the Equity Scholarships booklet for 2007 admissions will be sent to schools in late July. The booklets contain all the information needed about Equity Scholarships as well as application form.

The booklet and application form will also be available to download from UAC's website in August. The on-time closing date for 2007 admissions is Friday 29 September 2006 (late applications will be accepted until Thursday 30 November 2006).

## What's new in the UAC 2007 Guide?

The *UAC 2007 Guide* will have some major changes from last year's edition. The main differences will be the:

- inclusion of cut-offs in the course descriptions, and
- combining of all courses into one table.

Course descriptions will now include a table which shows the type of places available – Commonwealth-supported (CSP) domestic fee-paying (DFEE) or international fee-paying

(IFEE) – course codes and duration, cut-offs and course costs (for fee-paying courses only).

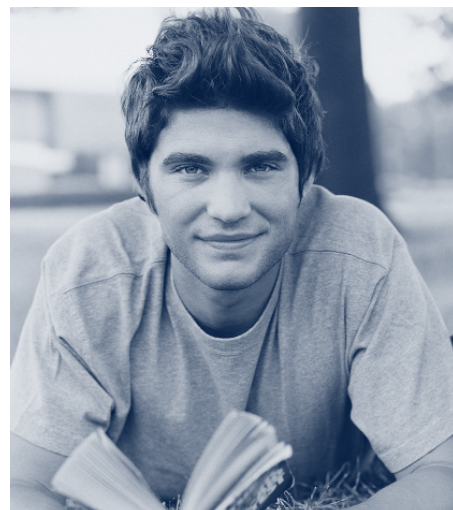
As you can see in the example below, this will enable Guide users to cross-reference their chosen course with the description, cut-off and code on one page, reducing the chances of entering the wrong course code in their UAC application.

In addition, three tables of courses have been combined, enabling users to compare all CSP,

DFEE and IFEE courses at a glance, rather than flipping between tables.

Each type of place is clearly defined and it is hoped this change will reduce confusion among applicants about the types of places available.

Course Name					
Campus	CSP	100000	3F/EqP	70.05	SC
	DFEE	110000	3F/EqP	69.05	A\$ 8 000
	IFEE	100000	3F	70.05	A\$ 13 000



UAC NEWS for the: Principal | Careers Adviser | Year 12 Adviser | Curriculum Adviser

Copies of the current and previous issues of UAC News can be downloaded from UAC's website at [www.uac.edu.au/pubs/uacnews.html](http://www.uac.edu.au/pubs/uacnews.html)

# Study costs and financial assistance

Study costs at university depend on whether students are enrolled in a Commonwealth-supported place (CSP) or a domestic fee-paying place (DFEE). Students enrolled in a CSP course pay a student contribution (only **part** of the course cost); students enrolled in a DFEE course pay a tuition fee (**all** of the course cost).

## CSP courses

The Commonwealth Government contributes to the study costs for students enrolled in CSP courses; students must pay the remainder through a student contribution. Institutions determine their own student contribution level for each unit of study within a range set by the government. The exceptions are education and nursing, identified by the government as national priorities. Student contributions will, therefore vary between institutions and courses.

Australian citizens and holders of an Australian permanent resident humanitarian visa may pay their student contribution up front (and receive a discount) or they may request a HECS-HELP (Higher Education Loan Programme) loan and repay the rest later. Repayments are based on income and are made through the taxation system. Students do not have to start repaying their HECS-HELP loan until their income reaches a certain level (\$36 184 for 2005–06).

New Zealand citizens and holders of an Australian permanent resident visa (other than an Australian permanent resident humanitarian visa) do not have access to HECS-HELP loans and must pay their student contribution up front.

## DFEE courses

Nine institutions will offer DFEE courses for 2007 admissions. They are Australian Catholic University, Macquarie University, La Trobe University, Southern Cross University, the University of Newcastle, the University of New South Wales, the University of Technology, Sydney, the University of Sydney and the University of Western Sydney.

Students enrolled in DFEE courses must pay a tuition fee. Each institution sets its own tuition fees for each course. Tuition fees will, therefore, vary between institutions and courses.

Australian citizens and holders of an Australian permanent resident humanitarian visa in a DFEE course can pay their tuition fees in three different ways:

- pay the full tuition fee up-front

<i>Band</i>	<i>Student contribution ranges for 2005 - Post-2005 students</i>	<i>Student contribution ranges for 2006 - Post-2005 students</i>
<b>Band 3</b> (law, dentistry, medicine, veterinary science)	\$0 – \$8 018	\$0 – \$8 170
<b>Band 2</b> (accounting, commerce, administration, economics, maths, statistics, computing, built environment, health, engineering, science, surveying, agriculture)	\$0 – \$6 849	\$0 – \$6 979
<b>Band 1</b> (humanities, arts, behavioural science, social studies, foreign languages, visual and performing arts)	\$0 – \$4 808	\$0 – \$4 899
<b>National Priorities</b> (education, nursing)	\$0 – \$3 847	\$0 – \$3 920
<b>Tuition Fees</b>	Tuition fees are set by institutions. The tuition fee set for a unit of study must be equal to or greater than the highest student contribution amount charged by the institution for that unit of study.	

- receive a FEE-HELP (Higher Education Loan Programme) loan for the full tuition fee; or
- pay some of the tuition fee up front and receive a FEE-HELP loan for the balance of the tuition fee.

FEE-HELP loans cover up to the full amount of tuition fees, with students able to borrow a total of \$80 000 (or \$100 000 for medicine, dentistry or veterinary science students). FEE-HELP loans are subject to a 20 per cent loan fee. Repayments are based on income and are made through the taxation system.

Students do not have to start repaying their FEE-HELP loan until their income reaches a certain level (\$36 184 for 2005–06).

New Zealand citizens and holders of an Australian permanent resident visa (other than an Australian permanent resident humanitarian visa) do not have access to FEE-HELP loans and must pay their tuition fee up front.

## Applying for domestic fee-paying courses (DFEE)

Students apply for DFEE courses exactly the same way they apply for CSP courses, but must use the correct course code from the table of courses available or the course description in the UAC Guide. Applicants may apply for the same course as both a CSP and DFEE.

Students must ensure that the correct codes are entered and that codes for DFEE courses are not included unless seeking entry for a fee-paying place. Students sometimes confuse paying student contributions for a CSP course with a DFEE course; they are not the same. UAC sends acknowledgement letters to all applicants, which should be checked carefully to ensure that DFEE courses have not been listed by mistake.

## New procedures for international applicants

International students sitting a NZ National Certificate of Educational Achievement (NCEA) Level 3 no longer have to apply directly to institutions.

Under changes to UAC's international student application process, they can now apply through UAC for 2007 admissions – filling in up to nine course preferences on one form.

Previously these students had to apply directly to the institutions. International fee-paying applicants are still restricted in courses they can select, but now only have to lodge one application – with up to nine

course choices – through UAC.

Under new guidelines, international fee-paying applicants must apply through UAC if they are attempting:

- a 2006 Australian Year 12 in Australia
- a 2006 Australian Year 12 overseas
- an International Baccalaureate in Australia in 2006
- an NZ NCEA Level 3.

All other international fee-paying applicants must still apply directly to the institutions, not through UAC.

# University news & updates

## Australian National University

The Australian National University will have several mid-year places available in most of its undergraduate courses this year. Since this is a change from recent years the university encourages applications, especially from applicants who missed out on an ANU place at the start of the year. Another good reason to apply to ANU at mid-year is that ANU will unfortunately be raising student contributions (for Commonwealth supported places) by 25% in 2007. Students who commence in 2006 will not be affected by the increase. Students who were made an offer at the beginning of 2006 but who deferred their enrolment until 2007 are also encouraged to return early from their deferment at mid-year to take advantage of the reduced rate.

## Charles Sturt University

### 'I' day

CSU's Schools of Communication and Visual and Performing Arts will hold an information day at the Powerhouse Museum in Sydney on Saturday 26 August 2006. Staff, students and recent graduates from the following courses will be there to speak to interested potential students, parents and teachers:

- B Arts (Communication – Advertising) 211207 (CSP)
- B Arts (Comm. – Commercial Radio) 211227 (CSP)
- B Arts (Comm. – Journalism) 211237 (CSP)
- B Arts (Comm. – Public Relations & Organisational Communication) 211247 (CSP)
- B Arts (Comm. – Theatre Media) 211287 (CSP)
- B Arts (Design for Theatre & Television) 211304 (CSP)
- B Arts (Graphic Design) 211404 (CSP)
- B Arts (Jewellery) 211504 (CSP)
- B Arts (Animation & Visual Effects) 211554 (CSP)
- B Arts (Photography) 211704 (CSP)
- B Arts (Acting for Screen & Stage) 211724 (CSP)
- B Arts (Television Production) 211734 (CSP)

### Additional selection criteria

'Portfolio and interview' are no longer compulsory for 211404, 211504, 211554, 211704 and 211734 and related double degrees. Interviews are available on request for students who wish to supplement their application.

## La Trobe University

### Mildura campus

Students can now apply through UAC for courses at La Trobe University's Mildura campus. Mildura is located on the Murray River bordering south-west NSW.

Courses on offer for 2007 include:

- B Arts 189910 (CSP)
- B Business 189935 (CSP)
- B Commerce 189940 (CSP)
- B Education 189980 (CSP)
- B Nursing 189928 (CSP)
- B Visual Arts 189905 (CSP)
- B Visual Arts (Graphic Design) 189908 (CSP)

## Southern Cross University

### Course changes

#### New courses

- Associate Degree in Multimedia Coffs Harbour, 2F or 4P 332358 (CSP)
- B Multimedia Coffs Harbour, 3F or 6P 332158 (CSP)
- B Business in Hotel Management The Hotel School, Sydney, 3F 354140 (DFEE) 334140 (IFEE) CSP not offered

#### Additional campuses for existing courses

- B Education (Primary) Coffs Harbour, 4F or 8P 331155 (CSP) (on-campus at Lismore and now also on-campus at Coffs Harbour)

#### Course in development

- B Clinical Science\* Lismore, 3F or 6P 335115 (CSP)

\*Subject to University approval.

### Deleted courses

- B Human Services 331153 (CSP)
- B Indigenous Tourism Management 334900 (CSP)
- B Business in Tourism Management/ B Indigenous Studies 337400 (CSP)
- 337100 B Indigenous Studies and 337101 B Indigenous Studies (Trauma and Healing) are no longer available through UAC. These courses are now available by direct application only to SCU's Gnibi College of Indigenous Australian Peoples (gnibi@scu.edu.au). Contact Gnibi College to arrange a school visit from its all-Indigenous academic staff.

## University of Newcastle

### Rural/Remote Admissions Scheme (RRAS) for Medicine

The Commonwealth Government has developed a number of Rural Health Strategies including rural health education initiatives which aim to improve the access to, and health care of, the Australian community in rural and remote areas.

The Faculty of Health introduced a new Rural/Remote Admission Scheme (RRAS) for B Medicine in 2006 (for entry in 2007). This scheme is aimed at increasing the number of students of rural or remote origin selected for entry to the medicine program at Newcastle.

To be eligible for consideration under RRAS an applicant must demonstrate that they have lived in a rural/remote location for at least five years (consecutive or cumulative from commencement of primary school).

Selection and application details will be available in June 2006 at: [www.newcastle.edu.au/school/medprac-pop/enrolments/ruralstream.html](http://www.newcastle.edu.au/school/medprac-pop/enrolments/ruralstream.html)

Enquiries should be directed to:  
Program Officer (BMed)  
Faculty of Health  
tel: (02) 4921 5680  
email: [bmed-admissions@newcastle.edu.au](mailto:bmed-admissions@newcastle.edu.au)

*continued on next page*

# University news & updates *continued . . .*

## New programs

### Bachelor of Podiatry

The University of Newcastle has introduced a new three-year podiatry program for admission from 2007.

The B Podiatry program will be offered from the Ourimbah campus and will include biomedical science and podiatry studies as well as approximately 1000 hours of clinical experience.

Graduates of the program can expect to find employment in a variety of urban and rural health settings including private practices, general hospitals, rehabilitation and community health centres, sports clinics, research centres and consultancies.

Accreditation for the degree is being sought from the NSW Podiatry Registration board and the Australasian Podiatry Council.

Applicants interested in applying for

B Podiatry should include UAC code 480767 (CSP) or 490767 (DFEE) on their UAC application.

### Bachelor of Industrial Design

The four-year B Industrial Design program has been replaced with an articulated program of study offered in conjunction with TAFE NSW - Hunter Institute.

The program of study includes the completion of the three-year TAFE Advanced Diploma in Product Design and Development followed by one year of study at the University of Newcastle.

Students wishing to apply for the program should apply initially via TAFE. The one-year completion program at the University of Newcastle will be available from 2009 (subject to approval).

Applicants interested in the program can call (02) 4921 6065 for more information.

## Changes to programs

### Entry requirement change for Bachelor of Medical Radiation Science

The entry requirement for B Medical Radiation Science (Diagnostic Radiation, Nuclear Medicine and Radiation Therapy) has been relaxed.

From 2007 the course prerequisites of Mathematics and Physics are no longer mandatory. However, these subjects remain as assumed knowledge requirements.

Applicants interested in applying for B Medical Radiation Science should include one or all of the following UAC codes on their UAC application:

- 480690 (CSP) and/or 490690 (DFEE) for Diagnostic Radiography
- 480700 (CSP) and/or 490700 (DFEE) for Nuclear Medicine
- 480710 (CSP) and/or 490710 (DFEE) for Radiation Therapy.

## Important dates for 2007 admissions

The *UAC 2007 Guide* will be distributed to schools from the week beginning Monday 24 July 2006. The Guide will be available from newsagents from Tuesday 1 August 2006.

### Applications

Early August 2006	applications open
Friday 29 September 2006	on-time applications close
Tuesday 31 October 2006	late applications close with \$94 late fee
Thursday 30 November 2006	late applications close with \$106 late fee
Thursday 1 February 2007	final close of applications with \$117 late fee

### NSW HSC

Tuesday 19 December 2006	2006 NSW HSC results e-released by BOS
Wednesday 20 December 2006	UAls for NSW HSC students e-released by UAC

### ACT Year 12

Tuesday 19 December 2006*	2006 ACT Year 12 results issued by ACT Board of Senior Secondary Studies
Thursday 21 December 2006*	UAls for ACT Year 12 students e-released by UAC

\* to be confirmed

### Change of preferences

Mid-August 2006 – 4 January 2007	for consideration in Main Round
17 January 2007 – 22 January 2007	for consideration in Late Round
31 January 2007 – 1 February 2007	for consideration in Final Round

### Offers

Friday 27 October 2006	Distance Education offers e-released
Wednesday 6 December 2006	Early Round offers e-released
Wednesday 3 January 2007	Preliminary Round offers e-released
Wednesday 17 January 2007	Main Round offers e-released
Wednesday 31 January 2007	Late Round offers e-released
Wednesday 7 February 2007	Final Round offers e-released

## Artistic ambition

Two talented Year 12 visual arts students will get to see their major work on the cover of the *UAC 2007 Guide* and the *University Entry Requirements 2009 Year 10 Booklet*.

Each year UAC selects the cover artwork for both publications from the annual Art Express catalogue, which features an outstanding collection of HSC artworks.

The 2009 Year 10 Booklet cover features *Influences*, a painting by Bradfield College student Tara Guinness. Artwork has not yet been selected for the *UAC 2007 Guide*.

## UAC school kits

Last year UAC sent out the school kit information on CD, eliminating the need to use and send vast amounts of paper.

The bookmarks with important dates that once were sent as part of the school kits were printed as part of the Guide for students to tear-off and use as a ready reference.

The response to both of these innovations was so positive that UAC will continue to distribute the information in this fashion.