



Equity Scholarships 2017–18

Financial assistance for tertiary study

Essentials: Equity Scholarships (ES)



Important update: Indigenous Student Success Program (ISSP)

The Australian Government has released the ISSP guidelines which came into effect from 1 January 2017.

Institutions participating in UAC's Equity Scholarships program will continue to identify Indigenous students who have applied for Equity Scholarships via UAC and see details of their financial and other eligible disadvantages and can offer eligible applicants scholarships via ISSP.

Indigenous students seeking support via ISSP are therefore encouraged to apply for Equity Scholarships through UAC so that their circumstances are reported to participating institutions.

Applicants should also refer to institution websites for changes that have been made by individual universities and higher education providers.

Key dates

Wednesday 2 August 2017	ES applications open
Friday 1 September 2017	ES offer round
Friday 15 September 2017	ES offer round
Friday 29 September 2017	ES offer round
Friday 13 October 2017	ES offer round
Friday 27 October 2017	ES offer round
Friday 17 November 2017	ES offer round
Friday 24 November 2017	ES offer round
Friday 8 December 2017	ES offer round
Friday 22 December 2017	ES offer round
Monday 15 January 2018	ES offer round

The most important scholarship offer rounds for Year 12 students are on **Friday 22 December 2017** and **Monday 15 January 2018**. These rounds are when most Year 12 applicants receive their Equity Scholarships offers.

Further ES offer rounds are available throughout 2018. For full details of offer rounds and participating institutions, go to uac.edu.au/equity/offers/institution-offers.shtml. Check our website regularly as offer round participation by different institutions can and does change.

Supporting documentation must be provided no later than seven working days before a scholarship offer round to ensure assessment is complete.

Contacting UAC

Telephone:

1300 ASK UAC (1300 275 822)
from mobiles: (02) 9752 0200
from overseas: +61 2 9752 0200

In person:

Quad 2, 6 Parkview Drive
Sydney Olympic Park NSW 2127

For those travelling by train, UAC is 250 metres from Olympic Park railway station.

Office hours:

8.30am–4.30pm
Monday to Friday (Sydney time)

Postal address:

UAC
Locked Bag 112
Silverwater NSW 2128

Web address and email:

uac.edu.au
equity@uac.edu.au

Facebook:

facebook.com/uacinfo

Twitter:

twitter.com/uacinfo

YouTube:

youtube.com/uacinfo

Contents

Introduction to Equity Scholarships	2	Institution Equity Scholarships	15
What are Equity Scholarships?	2	Scholarship conditions	16
Am I eligible for ES?	2	Ongoing eligibility requirements	16
Educational disadvantages	3	Approved leave	16
Carer responsibilities	3	Study overseas or through cross-institutional arrangements	16
English language difficulty	3	Transfer to another institution	16
Financial hardship	4	Deferment	16
Indigenous Australian	5	Taxation	16
Long-term medical condition/disability or ongoing effects of abuse	5	Termination	16
Refugee status	5	Grievance procedures	16
Regional or remote disadvantage	6	Institution entries	17
Sole parent responsibilities	6	Australian Catholic University	17
Applying	7	Australian National University	17
How do I apply?	7	Charles Sturt University	17
Confirmation of application	7	International College of Management, Sydney	18
Equity Scholarships document package	7	La Trobe University	18
Declaration and Authority	8	Macquarie University	19
Provision of false information	8	Southern Cross University	19
What documents do I need to provide?	9	Torrens University Australia	20
Providing documents	9	University of Canberra	20
When do I provide documents?	9	University of New England	20
Change of name	9	University of Newcastle	21
Overseas documents	9	University of Sydney	22
Transferring your documents to a new application	9	University of Technology Sydney	23
Having your documents returned to you	9	University of Wollongong	24
After you apply	10	UNSW Sydney	25
Making changes to your application	10	Western Sydney University	25
Adding disadvantages to your application	10	Merit-based scholarships	26
Viewing correspondence from UAC	10	Other UAC resources	27
Offers	11	Publications	27
Offer round participation	11	Online	27
Successful applicants	11	ATAR	27
Unsuccessful applicants	11	Year 10	27
Offer round dates	12	Year 12	27
Common terms and abbreviations	13		
Participating institutions	14		

Introduction to Equity Scholarships

What are Equity Scholarships?

Equity Scholarships (ES) assist disadvantaged students with the general costs associated with tertiary study.

ES are awarded to students from low socio-economic backgrounds, particularly those who receive Centrelink income support payments such as ABSTUDY, Austudy, Youth Allowance, Newstart Allowance, Disability Support Pension, Parenting Payment (Single) or the Carer Payment.

There are two types of Equity Scholarships:

- Institution Equity Scholarships (IES): these are funded by individual institutions and their value, eligibility criteria and duration differ between institutions.
- Indigenous Student Success Program (ISSP): these are funded by the Australian Government and are not covered in this booklet.

Am I eligible for ES?

In order to be considered eligible for ES, you must already be enrolled at or applying for admission to an institution in any of the following ways:

- applying through UAC for admission as an undergraduate, postgraduate or international student
- applying for admission directly to an institution (a direct applicant)
- applying for admission through the Victorian Tertiary Admissions Centre (VTAC) or the Queensland Tertiary Admissions Centre (QTAC). See the table on page 7 for more information about which institutions accept ES through UAC.

Institutions make ES offers to applicants demonstrating the greatest level of need in a competitive application process.

When awarding ES, institutions will consider any specific requirements for individual scholarships, which can be found on their individual websites. See page 14 for details of institutions' scholarship websites.

Most institutions award ES to applicants who are receiving Centrelink income support payments and/or who can demonstrate additional types of disadvantage listed on pages 3–6.

Being eligible doesn't guarantee a scholarship

Meeting ES eligibility criteria doesn't guarantee that you'll be awarded a scholarship. There are limited scholarships and there are more applicants than scholarships. As part of a competitive application process, you are ranked against the eligibility criteria, and institutions award scholarships to applicants who best meet the eligibility criteria.

If you are unsuccessful it doesn't mean that you're not in need; rather, it means that there are other applicants who've been assessed as being in greater need.

Educational disadvantages

Institutions make ES offers to applicants demonstrating the greatest level of need in a competitive application process.

When awarding scholarships, institutions will consider their scholarship-specific requirements, as well as the forms of educational disadvantage listed in the tables below.

If you have to provide supporting documents, an 'Equity Scholarships document package' will be produced automatically when you apply. If you are not prompted to download an 'Equity Scholarships document package' you don't need to supply supporting documents.

Carer responsibilities

Definition

A person of any age who, without being paid, cares for another person who needs ongoing support because of a long-term medical condition, a mental illness, a disability, frailty or the need for palliative care. A carer:

- may or may not be a family member and may or may not live with the person they care for
- may be in receipt of a Centrelink Carer Allowance or Carer Payment.

Volunteers under the auspices of a voluntary organisation are not included.

Supporting documentation required

One (only) of the following:

- your Centrelink Customer Reference Number (CRN) if you are receiving a Carer Payment or Carer Allowance. You will be required to enter your CRN in your ES online application
- an independent statement to support your eligibility for carer responsibilities, completed and signed by a responsible person (see page 13) who knows your circumstances. You will need to explain why you are not in receipt of a Carer Payment or Carer Allowance.

English language difficulty

Definition

A person who satisfies all of the following criteria:

- due to their non-English speaking background, experiences difficulties that affect their ability to study
- came to Australia from a non-English speaking country within the last five years
- didn't previously undertake any formal education at an institution where the language of instruction was English
- hasn't undertaken two or more years of full-time study in Australia in a Diploma, Advanced Diploma, Bachelor degree or higher level award.

Supporting documentation required

All of the following:

- details of the studies you have undertaken
- a copy of your first immigration visa (if your current immigration visa specifies a different residency visa from that specified on your first, attach a copy of both) or, if that cannot be provided, an international movement record
- a statement of attendance from an Intensive English Centre (if applicable).

Financial hardship

There are four categories of financial hardship. A person is considered to be experiencing financial hardship if they satisfy one (only) of the following definitions.

Definition

A person currently receiving a Centrelink (or other Commonwealth) means-tested income support payment (such as a Disability Support Pension, Parenting Payment (Single) or Carer Payment).

Supporting documentation required

Your Centrelink Customer Reference Number (CRN). The CRN must be in your name. You will be required to enter your CRN in your ES online application.

Definition

A person expecting to receive a Centrelink (or other Commonwealth) means-tested income support payment in 2017–18.

Supporting documentation required

You will be asked to indicate in your ES online application when you expect to receive a Centrelink (or other Commonwealth) means-tested income support payment.

No documentation is required to support eligibility for the expectation of receipt of a means-tested payment when you apply.

You will be required to verify receipt of an allowance to your institution after enrolment and prior to payment of an Equity Scholarship. Alternatively, email your CRN to equity@uac.edu.au once your first payment has been credited to your bank account and we will update your assessment.

Definition

A person able to provide comprehensive information demonstrating exceptional financial hardship.

Applicants who are eligible to claim a Centrelink means-tested allowance but choose not to are not eligible to claim exceptional financial hardship.

Applicants whose family income is above the Centrelink eligibility threshold are generally not eligible to claim exceptional financial hardship.

Supporting documentation required

Evidence of eligibility for exceptional financial hardship demonstrating a level of real and enduring financial hardship. Supporting documentation requirements are provided in the 'Scholarships document package'.

Definition

A person who is a dependent student between the ages of 16 and 19 years old (up to the end of the calendar year you turn 19) currently undertaking a Year 12 qualification, whose parent/guardian is in receipt of Family Tax Benefit (FTB) Part A.

You are not eligible to claim this disadvantage if you are a parent receiving FTB Part A.

Supporting documentation required

- A recent Centrelink Family Assistance Letter, no older than three months prior to the date you applied for ES, issued to your parent/s or guardian/s demonstrating receipt of FTB Part A

OR

- a copy of a Centrelink income statement issued to your parent/s or guardian/s, no older than three months prior to the date you applied for ES, demonstrating receipt of FTB Part A.

Note: Your parent/s or guardian/s can view and download their Centrelink income statement/s by logging into their Centrelink online account, or myGov, if they have set up an account. Alternatively, your parent/s or guardian/s must call or visit a Centrelink office to obtain a Centrelink Family Assistance letter. Allow at least a week for Centrelink to process your request.

If you have any queries about this documentation, email equity@uac.edu.au.

Indigenous Australian

Definition

A person who satisfies all of the following criteria:

- is of Australian Aboriginal or Torres Strait Islander descent
- identifies as an Australian Aboriginal or Torres Strait Islander
- is accepted as an Australian Aboriginal or Torres Strait Islander in the community in which they live or have lived.

Institutions may use this criterion in conjunction with other demonstrated disadvantages in awarding their IES.

Supporting documentation required

One (only) of the following:

- your Centrelink Customer Reference Number (CRN) so UAC can confirm you currently receive ABSTUDY. You will be required to enter your CRN in your ES online application
- a 'Declaration – Australian Aboriginal or Torres Strait Islander'. You will be able to print this declaration at the end of your ES online application. You will need to correctly complete and return the declaration to UAC.

If your Aboriginality is questioned you will be asked to provide further evidence.

Long-term medical condition/disability or ongoing effects of abuse

Definition

A person whose ability to study at university is being affected, or is likely to be affected, by the long-term and ongoing effects of one of the following:

- a severe and long-term or a severe and recurrent medical/psychiatric condition or illness
- a learning, sensory, physical, psychological or other disability/disorder
- trauma or abuse.

Supporting documentation required

All of the following:

- a personal statement (see your 'Equity Scholarships document package')
- a Medical Impact Statement (MIS) (see page 13) completed by a registered health professional who is treating you for your condition
- an Educational Impact Statement (EIS) (see page 13) completed by a responsible person who can comment on the impact of your studies.

Refugee status

Definition

A person who entered Australia in one of the following ways:

- as a refugee
- on a Global Special Humanitarian visa (subclass 202)

or was granted either of the above by the Australian Government after arriving in Australia.

Institutions may use this criterion in conjunction with other demonstrated disadvantages in awarding ES.

Supporting documentation required

One (only) of the following:

- a copy of your Australian entry visa showing refugee status
- a copy of your Red Cross or United Nations High Commissioner for Refugees (UNHCR) registration if you arrived in Australia on a non-refugee visa
- a copy of your document for travelling to Australia
- a copy of your Global Special Humanitarian visa (subclass 202).

Regional or remote disadvantage

Definition

A person who, within the two years immediately prior to the start of their current or proposed period of higher education study, lived in a regional or remote area of Australia for at least 12 months.

Supporting documentation required

Documents substantiating your residential (not postal) address in a regional or remote area of Australia for a period of at least 12 months in the two years immediately prior to the start of your current or proposed higher education course of study. Documents must be in your name.

Documents may include: bank statements; a letter of attendance from your school or higher education provider showing your home address at the time you attended; Centrelink letters; electoral commission enrolment form; utilities bill; phone bill.

Your permanent residence postcode/s will be used to assess whether you lived in a regional or remote area of Australia.

The Australian Standard Geographic Classification Remoteness Areas (ASGC RA) system map can be accessed at doctorconnect.gov.au. You can use this tool as a guide for your postcode. All categories other than 'RA1 – Major Cities of Australia' are considered to be regional or remote.

Contact equity@uac.edu.au if you need more information about the documents you must provide.

Sole parent responsibilities

Definition

A person of any age who is single and has at least one dependent child under 18 who is wholly or primarily in their care and who is living in Australia.

Supporting documentation required

One (only) of the following:

- your Centrelink Customer Reference Number (CRN) if you are receiving a Parenting Payment (Single). You will be required to enter your CRN in your ES online application
- another Centrelink (or other Commonwealth) means-tested income support payment as a single person with at least one dependent child such as Newstart Allowance
- an independent statement to support your eligibility for sole parent responsibilities, completed and signed by a responsible person (see page 13) who knows your circumstances.

You will need to explain why you are not in receipt of a Parenting Payment (Single).

Applying

Your application remains 'live' throughout the admissions period and will be considered by participating institutions for all relevant ES offer rounds.

Applicants may only submit one ES application during the 2017–18 admissions period.

How do I apply?

Apply through ES Apply on UAC's website at uac.edu.au/equity/apply.

When you apply, you don't have to nominate the scholarship you're applying for.

In your ES online application, you'll be asked a series of questions to gather all the information needed to allow institutions to determine which of their scholarships you're eligible for.

After you enter your contact information in your ES online application an ES application number and four-digit ES PIN will be generated.

You will be asked for details about your application/s for admission. If you don't supply all the relevant information you may miss out on being awarded a scholarship.

You will also need to agree to the 'Declaration and Authority' – you can read the printed version on page 8.

Confirmation of application

Once you have submitted your ES application, you must print your 'Confirmation of application'.

Equity Scholarships document package

Download your Document Package to check whether you need to provide supporting documents to UAC.

If you need to provide supporting documents you can upload them via 'Manage your Application'.

Confidentiality – who sees my application?

All information provided by applicants is treated as confidential according to UAC's Privacy Policy and institution privacy statements. Only authorised personnel at UAC and/or institutions will have access to your application.

Your personal information can only be released to a third party in special circumstances, such as where the law requires it, or where you give permission. Read UAC's Privacy Policy at uac.edu.au/general/privacy.shtml.

Victorian Tertiary Admissions Centre and Queensland Tertiary Admissions Centre applicants

Five institutions accept ES applications through UAC from students applying for admission to tertiary study through the Victorian Tertiary Admissions Centre (VTAC) or the Queensland Tertiary Admissions Centre (QTAC).

Institution	Accepts ES applications from UAC applicants	Accepts ES applications from VTAC applicants	Accepts ES applications from QTAC applicants
Australian Catholic University	✓	✓	✓
Charles Sturt University	✓	✓	✗
La Trobe University	✓	✓	✗
Southern Cross University	✓	✗	✓
University of New England	✓	✗	✓

If you have a disability and are having problems with the UAC application process, call us on 1300 ASK UAC (1300 275 822) or (02) 9752 0200 from mobiles between 8.30am and 4.30pm (Sydney time) Monday to Friday, email us at equity@uac.edu.au or write to the Equity Unit, UAC Locked Bag 112, Silverwater NSW 2128, Australia. We will help you with your application.

Declaration and Authority

This is a printed version of the online 'Declaration and Authority' you will have to accept when you apply through ES Apply.

- 1 I declare that all the information submitted is true and complete.
 - 2 I declare that I have read and understood the UAC Privacy Policy on UAC's website at uac.edu.au/general/privacy.shtml.
 - 3 I authorise UAC to verify any information provided by me.
 - 4 I authorise:
 - UAC to use Centrelink Confirmation eServices to perform a Centrelink enquiry of my Centrelink Customer details and concession card status in order to enable UAC to determine if I qualify for Equity Scholarships
 - the Australian Government Department of Human Services (the department) to provide the results of that enquiry to UAC.
- I understand that:
- the department will use information I have provided to UAC to confirm my eligibility for Equity Scholarships 2017–18 and will disclose to UAC my personal information including my name, address, concession card status, payment type, payment status, income, assets, one-off payment, deduction and shared care arrangements
 - this consent, once signed, remains valid while I am an applicant of UAC unless I withdraw it by contacting UAC or the department
 - I can obtain proof of my circumstances/details from the department and provide it to UAC so that my eligibility for Equity Scholarships can be determined
 - if I withdraw my consent or do not alternatively provide proof of my circumstances/details, I may not be eligible for Equity Scholarships provided through UAC.
- 5 I understand that UAC and the participating institutions may check my visa and residency status using Visa Entitlement Verification Online (VEVO), and I authorise UAC and the participating institutions to do so.
 - 6 I authorise UAC to provide all information and documents provided with and/or obtained in connection with this application to all institutions participating in Equity Scholarships through UAC or their affiliates for any purpose connected with this application.
 - 7 I authorise UAC to collect, receive, store, transfer and use any information provided by me, or any information obtained in connection with this application, and to disclose such information to all participating institutions, Universities Australia (UA), UA member institutions, the members of the Australasian Conference of Tertiary Admissions Centres (ACTAC), and any other authority or tertiary educational institution either in Australia or overseas, where UAC reasonably considers it necessary to make such disclosure.
 - 8 I understand that UAC may disclose the personal information I have given in this application to the Department of Social Services, or its successor, for the purposes of administering Relocation Scholarships and Student Start-up Loans.
 - 9 I understand that UAC and the participating institutions have the right to vary or cancel an Equity Scholarships application and/or application for admission or an enrolment made on the basis of what UAC or a participating institution determines to be untrue or incomplete information from any source.
 - 10 I understand that institutions make Equity Scholarship offers based on the information provided by me and on advice received from UAC. If a participating institution subsequently finds that the information or advice was incorrect, it may withdraw the offer.

Provision of false information

If UAC or any participating institution knows or has reason to believe that a student in receipt of an Equity Scholarship has provided false or misleading information, UAC, on behalf of the institution/s, is required to re-assess the student's entitlement to the scholarship. UAC must then notify the relevant institution of the suspected offence and provide the institution with a copy of the student's application and any other relevant information requested by the institution.

What documents do I need to provide?

Once you have submitted your ES application, an 'Equity Scholarships document package' will be produced automatically if you have to provide supporting documents. If you don't receive an 'Equity Scholarships document package' you don't need to supply supporting documents.

Providing documents

If you need to provide any documents to UAC in support of your ES application, you'll be told in your 'Equity Scholarships document package', which you'll be prompted to download when you complete your application.

Documents can be:

- uploaded by logging in to Manage your application; or
- posted in hard copy to UAC.

Supporting documentation does not need to be verified.

To ensure your ES application is assessed correctly, all documents you submit must be legible and easy to read, especially visas and stamps with dates.

When do I provide documents?

In order for your ES application to be assessed in time for a particular offer round, you should apply and provide your documentation as early as possible.

Supporting documentation must be provided no later than seven working days before a scholarship offer round to ensure assessment is complete.

See 'Offer round dates' on page 12 for more information about when documentation must be received at UAC for each offer round. You can also check the UAC website at uac.edu.au/equity.

Change of name

If you have documents under a previous name, you must supply documentary evidence to prove your change of name, such as a marriage certificate, deed poll registration or other registration with the Registry of Births, Deaths & Marriages.

The documentation must show your previous and current name/s.

Overseas documents

If your documents are not in English, you must supply a copy of:

- the document in the original language
- an English language translation of the document.

Your documents must be translated by:

- Multicultural NSW (visit multicultural.nsw.gov.au), or
- a translator accredited by the National Accreditation Authority for Translators and Interpreters (NAATI). A list of NAATI-accredited translators in Australia and some overseas locations is available at naati.com.au or call (02) 9267 1357.

Transferring your documents to a new application

You can request that your documents from a previous admissions period be transferred to the 2017–18 admissions period. The documents must relate to an application made within the last five years and you will have to pay a fee of \$90.

To have your documents transferred, download the 'Document transfer' form available at uac.edu.au/undergraduate/faq, provide your payment details as requested and post to UAC, Locked Bag 112, Silverwater NSW 2128.

Having your documents returned to you

Any documents you provide to UAC can be returned to you for a fee. If the documents relate to the current admissions period, the fee is \$42. If the documents relate to a previous admissions period (up to five years), the fee is \$90.

To have your documents returned, complete the 'EAS and Equity Scholarships document retrieval' form at uac.edu.au/undergraduate/faq, provide your payment details as requested and post to UAC, Locked Bag 112, Silverwater NSW 2128.

After you apply

Making changes to your application

If your circumstances change after you have submitted an ES online application, do not commence a new application within the same admissions period. You can use Manage your application at uac.edu.au/equity/manage-your-application to manage your application. You will need your ES application number and ES PIN to log in.

Using Manage your application you can:

- change your ES PIN
- change your contact details
- view and print your 'Confirmation of application' and 'Equity Scholarships document package'
- add disadvantages
- view and print your outcome letter.

If you need to make any other type of change to your application, email equity@uac.edu.au.

Adding disadvantages to your application

You can add disadvantages to an application you have previously submitted in the same application period. Do not start a new application.

Go to Manage your application at uac.edu.au/equity/manage-your-application to add additional disadvantage/s to your application.

Remember to download your 'Confirmation of application' and 'Equity Scholarships document package' if you've added disadvantage/s, as you may need to supply additional supporting documents.

Additional disadvantages and all associated supporting documentation must be received by UAC at least seven working days before a scholarships offer round to be considered in that round.

Contact equity@uac.edu.au if you have any queries about this process.

Viewing correspondence from UAC

You must provide an email address when you submit your ES application as UAC will send you email messages when you have correspondence about your ES application. When you receive an email alert from UAC, go to Manage your application to view the correspondence and take appropriate action. We recommend that you go to Manage your application regularly to check for new correspondence.

Some email accounts might send emails from UAC to your junk folder. Add the domain uac.edu.au to your list of safe email contacts to stop this from happening. It is your responsibility to check your emails regularly (including your junk emails) for any messages from UAC.

Offers

You can only receive an ES offer from an institution:

- from which you've received an offer of admission OR
- at which you're currently enrolled.

ES offers are made to applicants by UAC on behalf of UAC's participating institutions in conjunction with each undergraduate offer round. After each scholarship round, outcomes will be available to applicants at 'ES Outcomes' at uac.edu.au/equity.

To access your outcome you'll need your ES application number and ES PIN.

Institutions decide which scholarship rounds they will participate in and who they will make ES offers to. UAC doesn't select applicants, or have the power to persuade institutions to make a particular offer, or question decisions made by institutions.

Being eligible doesn't guarantee the offer of a scholarship, as you are competing against other eligible applicants.

Offer round participation

Not all institutions make scholarship offers in every offer round. To check which institutions may participate in each offer round visit uac.edu.au/equity/offers/institution-offers.shtml.

Successful applicants

If you've been awarded an ES, you'll receive an email from UAC advising that you have correspondence.

Your scholarship offer is made on the condition that you're eligible to receive a scholarship on your first census date for the scholarship period. Institutions will confirm your eligibility before any payments are made to you.

If you're awarded an ES, the institution will provide details of when and how your payment will be made.

Some institutions make scholarship offers directly to successful applicants.

If you have any enquiries about your scholarship offer, the associated terms and conditions, or the acceptance process, contact the institution that has awarded your scholarship.

Unsuccessful applicants

If you haven't been awarded an ES in the most recent offer round, the following message will be displayed in 'ES Outcomes' at uac.edu.au/equity.

You have not, as yet, been made an Equity Scholarship offer. Your application will be considered in future offer rounds. To be considered for an Equity Scholarship offer you must be currently enrolled at, or have received an offer of admissions to, an institution participating in the relevant scholarship offer round.

If you're unsuccessful, your application may be considered in future offer rounds provided the institution at which you are currently enrolled or from which you have received an offer of admission is participating in that offer round. Visit uac.edu.au/equity/offers/institution-offers.shtml to check this information.

If your ES application is unsuccessful in the 2017–18 admissions period, you're welcome to re-apply in future admissions periods, if you meet the scholarship eligibility criteria of the institution/s to which you are applying and/or at which you are enrolled.

UAC won't use any of your previous application material for subsequent ES applications. You must submit a new application (and new supporting documentation if required).

Do not submit more than one ES online application in the same admissions period.

Some institutions make Equity Scholarships offers directly to successful applicants. You may still receive a scholarship offer from an institution even if you have received an unsuccessful outcome through UAC.

Offer round dates

Supporting documentation must be received at UAC at least seven working days before an Equity Scholarships offer round in order to be considered in that round.

ES offer round	Apply by and documents received at UAC by 4.30pm	ES offer outcomes released
September Round 1	Wednesday 23 August 2017	Friday 1 September 2017
September Round 2	Wednesday 6 September 2017	Friday 15 September 2017
September Round 3	Wednesday 20 September 2017	Friday 29 September 2017
October Round 1	Wednesday 4 October 2017	Friday 13 October 2017
October Round 2	Wednesday 18 October 2017	Friday 27 October 2017
November Round 1	Wednesday 8 November 2017	Friday 17 November 2017
November Round 2	Wednesday 15 November 2017	Friday 24 November 2017
December Round 1	Wednesday 29 November 2017	Friday 8 December 2017
December Round 2	Wednesday 13 December 2017	Friday 22 December 2017
January Round 1	Friday 5 January 2018	Monday 15 January 2018

Common terms and abbreviations

Census date

The date on which all your enrolment requirements must be finalised. It is the last day you can withdraw from a course without financial penalty.

Commonwealth-supported place (CSP)

A place in a course to which the Australian Government contributes towards the cost.

Commonwealth-supported students

Students for whom the Commonwealth Government contributes towards their study costs. These students pay student contributions.

Continuing students

Students who have an active enrolment at a participating institution (ie students who are currently enrolled or on approved leave of absence from their higher education studies).

Direct applicant

Someone who applies directly to an institution (ie does not apply for admission through a tertiary admissions centre). If you're a direct applicant for admission, ES Apply will ask you to provide your application or reference number given to you by the institution when you applied. If you don't have it you will need to provide information about the course you've applied for.

Domestic fee-paying students (DFEE)

Students who are Australian or New Zealand citizens or permanent residents of Australia who meet the entire cost of their studies through tuition fees.

Educational Impact Statement (EIS)

If your application for Equity Scholarships includes a claim for consideration of a medical disadvantage, you need to arrange for an Educational Impact Statement to be completed by a responsible person (see the definition of a 'Responsible person' opposite) who can comment on the impact your medical condition/disability has, or will have, on your studies. The EIS is provided in your 'Equity Scholarships document package'.

Full-time study

Some institutions specify that you must be enrolled as a full-time student to be eligible for their scholarships.

To be considered a full-time student you must be undertaking a study load that is equivalent to at least 75 per cent of the Equivalent Full Time Study Load (EFTSL).

If your course load falls below 75 per cent of a normal full-time load, your eligibility status will be reviewed by the institution. Check each institution website for specific definitions.

HECS-HELP

A loan for eligible Commonwealth-supported students to pay their student contributions.

Indigenous Scholarship Support Program (ISSP)

Scholarships for Indigenous students funded by the Australian Government.

Internal student

A student who, for the majority of units of study in which they're enrolled in the scholarship period, is required to attend regular classes on campus.

Medical Impact Statement (MIS)

If your application for Equity Scholarships includes a claim for consideration of a medical disadvantage, you need to arrange for a Medical Impact Statement to be completed by a registered health professional who is treating the medical condition/disability you have claimed has, or will have, an effect on your studies. The MIS is provided in your 'Equity Scholarships document package'.

Part-time study

To be eligible for most Institution Equity Scholarships you must be studying full-time, unless there are exceptional circumstances. Institutions will apply their own policies to assess your eligibility for scholarship if you are studying part-time. If you have queries about part-time study, you should contact the institution directly.

Responsible person

A responsible person may be a higher education educator, doctor, specialist medical professional, lawyer, accountant, social worker, counsellor, religious or community leader. They must be familiar with your circumstances and able to comment and provide information about your educational disadvantage and its effect on your ability to study.

Your Educational Impact Statement (EIS) must be completed by a responsible person. If you're a 2017 Year 12 applicant, a responsible person is your school/college principal, counsellor, year adviser or careers adviser. If you're unable to have your school complete the EIS, you must attach an explanation as to why your school can't complete the statement and the relationship of the responsible person to yourself.

Participating institutions

Australian Catholic University

tel: 1300 ASK ACU (1300 275 228)
email: scholarships@acu.edu.au
website: acu.edu.au/scholarships

Australian National University

tel: 135 ANU
email: student@anu.edu.au
website: students.anu.edu.au/scholarships

Charles Sturt University

tel: Freecall 1800 334 733
(02) 6051 9976 CSU Scholarship Office
email: scholarships.officer@csu.edu.au
website: csu.edu.au/scholarships

International College of Management, Sydney

tel: Freecall 1800 110 490
email: icmsscholarships@icms.edu.au
website: icms.edu.au/scholarships

La Trobe University

tel: (03) 9479 3295 Scholarships Officer
email: scholarships@latrobe.edu.au
website: latrobe.edu.au/scholarships

Macquarie University

tel: (02) 9850 7337/6401 Scholarships Officer
email: csap@mq.edu.au
website: mq.edu.au/scholarships

Southern Cross University

tel: Freecall 1800 005 687
(02) 6620 3006 SCU Scholarships Office
email: equityscholarships@scu.edu.au
website: scu.edu.au/scholarships

Torrens University Australia

tel: 1300 575 803
email: via.torrens.edu.au/contact-us
website: torrens.edu.au

University of Canberra

tel: 1300 301 727
email: scholarships@canberra.edu.au
website: canberra.edu.au/scholarships

University of New England

tel: (02) 6773 4444 Student Central
email: une.edu.au/askune
website: une.edu.au/scholarships

University of Newcastle

tel: (02) 4921 5000
email: scholarships@newcastle.edu.au
website: newcastle.edu.au/scholarships

University of Sydney

tel: Freecall 1800 SYD UNI (1800 793 864)
(02) 8627 8112 Scholarships and Financial Support Service
email: scholarship.applications@sydney.edu.au
website: sydney.edu.au/scholarships

University of Technology Sydney

tel: (02) 9514 2527 UTS Scholarships Office
email: scholarships@uts.edu.au
website: uts.edu.au/future-students/scholarships

University of Wollongong

tel: (02) 4252 8959
email: scholarships@uow.edu.au
website: uow.edu.au/about/scholarships/index.html

UNSW Sydney

tel: (02) 9385 1078 UNSW Scholarships
email: scholarships@unsw.edu.au
website: scholarships.unsw.edu.au

Western Sydney University

tel: 1300 897 669
email: study@westernsydney.edu.au
scholarships@westernsydney.edu.au
website: westernsydney.edu.au/scholarships

Institution Equity Scholarships

Scholarship conditions	16
Australian Catholic University	17
Australian National University	17
Charles Sturt University	17
International College of Management, Sydney	18
La Trobe University	18
Macquarie University	19
Southern Cross University	19
Torrens University Australia	20
University of Canberra	20
University of New England	20
University of Newcastle	21
University of Sydney	22
University of Technology Sydney	23
University of Wollongong	24
UNSW Sydney	25
Western Sydney University	25

Scholarship conditions

Ongoing eligibility requirements

In order to maintain ongoing eligibility for your Equity Scholarship (ES) you must:

- maintain satisfactory academic progress, according to your institution's policy
- continue to meet the eligibility requirements described in the terms and conditions of the ES and provide documentary evidence to support your ongoing eligibility when requested.

It's your responsibility to advise your institution of any changes to your circumstances that would make you ineligible for your ES.

Approved leave

Institutions may approve requests from students to retain their scholarship when on approved leave.

Study overseas or through cross-institutional arrangements

Students who undertake a program of study (a) overseas or (b) with an institution that has been approved by their institution through a cross-institutional arrangement as a Commonwealth-supported student, won't be precluded from accessing their scholarship during this period, so long as the program of study is approved by their institution and will count towards the course requirements in which the student is enrolled. Students must continue to meet scholarship eligibility requirements during this period.

Transfer to another institution

If you hold an ES at one institution and you apply for and receive an offer of admission to a different institution, your scholarship won't be automatically transferred.

When you apply through UAC you're assessed in accordance with each institution's selection criteria.

If you've received part of an ISSP scholarship (see the inside front cover) at another institution, you must declare any previous scholarships you've received when you accept your scholarship for 2017–18 admissions.

Deferment

Students who are awarded an ES and defer the start of their studies, or withdraw from their course before their first census date, will forfeit their scholarship.

Taxation

If you're a student receiving full-time education at a school, college or university, your scholarship will be exempt from taxation subject to certain exceptions outlined in the Income Tax Assessment Act 1997, section 51–10, item 2.1A.

For further information, call the ATO enquiry line on 13 28 61.

Termination

Your Equity Scholarship will be terminated for any of the following reasons:

- you cease to meet the eligibility requirements
- the maximum duration of the scholarship has been reached
- you've failed to make satisfactory academic progress as defined by your institution
- you've committed serious misconduct (eg provided false or misleading information)
- you don't resume study at the end of an approved interruption-to-study period.

Grievance procedures

Grievances will be resolved in accordance with the relevant institution's policies.

Institution entries

Australian Catholic University

Introduction	At ACU, we believe that where you came from doesn't have to define where you're going. We will support you as you achieve your professional and personal goals. The ACU Equity Bursaries are just one way we empower you to determine your future.
How to apply	Applications are through UAC at uac.edu.au/equity .
For details of Equity Scholarships at ACU	acu.edu.au/scholarships

Australian National University

Introduction	<p>ANU stands for equity in all that we do, and we are committed to reflecting the extraordinary and increasing diversity of Australia. ANU offers a range of individual and corporate philanthropically funded scholarships, along with those funded by government so that your admission and success is based only on your ability and endeavour, whatever your background or identity.</p> <p>ANU prides itself on the student experience, residential opportunities and pastoral care that extends learning well beyond the classroom. Our Equity Scholarships program ensures that talented undergraduate and postgraduate students who are facing economic, social or geographic disadvantage do not miss out on the chance to come to ANU to be part of our community.</p>
How to apply	<p>Applications are through UAC at uac.edu.au/equity.</p> <p>Some scholarships may require additional information or support statements be sent directly to ANU. Read the information on ANU's scholarships website carefully so that you are aware of what is required. Incomplete applications will not be considered.</p>
For details of Equity Scholarships at ANU	anu.edu.au/students/scholarships/uac-equity-scholarships
Other information	Scholarship opening and closing dates, as well as the offer rounds that they are expected to be awarded in, will be published on the individual scholarship pages on the ANU scholarships website.

Charles Sturt University

Introduction	<p>CSU recognises that accessing tertiary education can be an expensive undertaking, and in response offer a comprehensive range of scholarships across courses at all levels for commencing and continuing students. In 2017 CSU awarded over \$3 million in scholarships to its students.</p> <p>At CSU we are committed to increasing access to higher education for students who are experiencing economic, social or geographical disadvantage and offer the institutional Charles Sturt University Equity Scholarships (CSUES) to support them during their studies.</p> <p>When awarding the CSUES, the University gives preference to applicants who demonstrate they meet the low socio-economic (financial hardship) plus other educational disadvantages.</p>
How to apply	Applications are through UAC at uac.edu.au/equity .
For details of Equity Scholarships at CSU	csu.edu.au/scholarships
Other information	Refer to the CSU scholarships website and guidelines for eligibility criteria and terms and conditions for scholarships.

International College of Management, Sydney

Introduction	<p>ICMS is dedicated to providing students access to career focussed higher education.</p> <p>ICMS has an expansive scholarship program which also offers a number of scholarships each year to students who are experiencing educational disadvantage and financial hardship.</p> <p>Financial support for tuition and or accommodation can be a significant help to a student starting college for the first time.</p> <p>All scholarship information and complete application details can be found at the ICMS website.</p>
How to apply	<p>Applications are through UAC at uac.edu.au/equity or can be made directly to the institution. Please visit the ICMS scholarships website.</p>
For details of Equity Scholarships at ICMS	<p>icms.edu.au/scholarship/equity-scholarship</p>

La Trobe University

Introduction	<p>La Trobe University has a number of scholarships available each year to assist students who are experiencing financial hardship and/or educational disadvantage and are commencing full-time undergraduate studies for the first time. La Trobe Equity Scholarships are open to commencing tertiary students only. If you have previously commenced a Bachelor degree or higher award at a tertiary institution, whether or not it was completed and regardless of how long ago you were enrolled, you will not be considered for La Trobe Equity scholarships.</p>
How to apply	<p>Applications are through UAC at uac.edu.au/equity.</p>
For details of Equity Scholarships at LTU	<p>latrobe.edu.au/scholarships</p>
Other information	<p>A student who enrolled at La Trobe after 30 June 2017 and who meets all of the criteria for commencing students at the time of that enrolment will be defined as a 'commencing student' for the purpose of this condition and will be eligible to be considered for La Trobe Equity Scholarships for 2018.</p>

Macquarie University

Introduction	<p>Through the provision of Equity Scholarships, Macquarie University seeks to support students whose opportunities to study at university have been hampered by disadvantages beyond their control. Applicants must demonstrate financial hardship, with consideration given to applicants who can also demonstrate any of the following:</p> <ul style="list-style-type: none"> ■ capacity to triumph over hardship ■ geographic disadvantage ■ long-term medical condition/disability ■ english language difficulty ■ ongoing effects of abuse.
How to apply	Applications are through UAC at uac.edu.au/equity .
For details of Equity Scholarships at MQ	mq.edu.au/scholarships

Southern Cross University

Introduction	<p>Southern Cross University is committed to supporting the access and success of students who experience educational disadvantage associated with low income, social and geographic circumstances.</p> <p>Commencing and continuing students who meet low socio-economic criteria are eligible to apply for:</p> <ul style="list-style-type: none"> ■ Southern Cross University Equity Scholarships ■ Southern Cross University Equity Book Bursaries <p>In addition to these two programs of support, Australian Indigenous students applying for UAC's Equity Scholarships program will be considered for Commonwealth Scholarships. For more details about SCU's program of financial support for Aboriginal and Torres Strait Islander students go to the Southern Cross University Scholarships website.</p>
How to apply	<p>Applications are through UAC at uac.edu.au/equity. It is expected that SCU will have a minimum of 6 offer rounds spread across 2018. You will only need to complete the application once to be considered for all of the Equity Scholarships and Commonwealth Scholarship programs available in 2018 at Southern Cross University.</p> <p>SCU Equity Book Bursaries are valued at up to \$500.</p> <p>SCU will select successful students for either a book bursary or a scholarship.</p> <p>Scholarships are offered to the most disadvantaged students.</p>
For details of Equity Scholarships at SCU	scu.edu.au/scholarships
Other information	<p>In 2018 SCU Equity Scholarships will be offered at a pro-rate basis: \$500 per unit enrolment. The maximum value for a scholarship will be \$2000.</p> <p>Need to find a place to live, some career advice, perhaps a small loan, a counsellor or a visit to the medical practice? You don't have to be on-campus to access many of the services and support resources available to you as an SCU student.</p> <p>Southern Cross University has a range of student support services. These include counselling, chaplaincy, academic assistance and learning support, and employment and career advice. Facilities vary depending on the campus and may include a medical centre, computing centre, sporting and recreation facilities, and a childcare centre. The University supports a variety of student organisation, clubs and societies for students to become involved in campus life.</p> <p>For more information, visit scu.edu.au/studentsupportservices.</p>

Torrens University Australia

Introduction	Torrens University Australia's Equity Scholarships aim to increase participation of Indigenous students from low socio-economic backgrounds by providing financial assistance towards the costs of studying full-time.
How to apply	Applications are through UAC at uac.edu.au/equity .
For details of Equity Scholarships at TUA	torrens.edu.au

University of Canberra

Introduction	The University of Canberra sponsors Access Scholarships as part of its Access Equity Scheme. Access Scholarships provide \$2,000 towards textbooks and other study-related expenses. Students may re-apply in subsequent years for an Access Scholarship.
How to apply	Applications are through UAC at uac.edu.au/equity .
For details of Equity Scholarships at UC	canberra.edu.au/scholarships

University of New England

Introduction	<p>UNE is one of Australia's great teaching and research centres, with a unique regional perspective. We are an innovator of flexible education delivery with leading academic authorities in a variety of teaching and research areas.</p> <p>We want you to do well at UNE, so we have a range of services, scholarships and programs in place to help you overcome your challenges and reach your goals. Our focus on student support has earned us a 5 star (maximum) rating in the 2017 Good Universities Guide, which puts us in the top 20 per cent of Australian universities.</p> <p>See all that UNE has to offer at une.edu.au.</p>
How to apply	<p>Applications are through UAC at uac.edu.au/equity.</p> <p>There are also several additional scholarships available directly through UNE. Apply at une.edu.au/scholarships.</p>
For details of Equity Scholarships at UNE	une.edu.au/scholarships

University of Newcastle

Introduction	<p>The University of Newcastle has a proud reputation of supporting motivated and talented students, regardless of their background or circumstances, not just to gain entry, but to thrive in their field of study.</p> <p>We are committed to providing assistance to students who are experiencing educational disadvantage and offer a comprehensive range of scholarships across different programs and study levels to support new and continuing students. In 2017, UON awarded over \$3.5 million in scholarships which supported over 1000 students who otherwise may not have been able to study.</p> <p>When awarding UON Equity Scholarships, the University gives preference to applicants who demonstrate financial hardship plus other educational disadvantages.</p>
How to apply	<p>Applications are through UAC at uac.edu.au/equity.</p> <p>There are also several additional scholarships available directly through UON. Apply at newcastle.edu.au/scholarships. Apply for as many scholarships as you meet the criteria for.</p>
For details of Equity Scholarships at UON	<p>newcastle.edu.au/scholarships</p>
Other information	<p>UON offers a wide range of scholarships open for individual application via the University website. Visit newcastle.edu.au/scholarships regularly to keep up-to-date with the latest in scholarships information and availability.</p> <p>The UON Student Loans Scheme also provides interest and fee-free emergency loans to students who demonstrate genuine need.</p> <p>Contact student-loansandwelfare@newcastle.edu.au for further information.</p>

University of Sydney

<p>Introduction</p>	<p>When you study at the University of Sydney you become part of one of the most vibrant and diverse academic communities in the world.</p> <p>We know that students who overcome disadvantage can achieve excellent results, especially with support from the University. The University of Sydney's Equity Scholarships assist academically gifted students with demonstrated financial disadvantage to pursue their tertiary education. Our Equity Scholarships are awarded for any undergraduate degree.</p> <p>When awarding Equity Scholarships, the University gives preference to academically gifted students who:</p> <ul style="list-style-type: none"> ■ are currently experiencing financial hardship (substantiated by current payment from Centrelink), or ■ are predicted to have financial hardship in 2018*, and ■ have fulfilled one or more of the following criteria: <ul style="list-style-type: none"> – carer responsibilities – Indigenous Australian – long-term medical condition/disability or ongoing effects of abuse – refugee status – regional or remote disadvantage – sole parent responsibilities. <p><i>*Scholarships and bursaries awarded based on predicted financial hardship will be subject to the provision of evidence to the University or the Department of Human Services by the deadline stated in the offer notification. Awards will automatically lapse if the document required is not presented by the deadline.</i></p>
<p>How to apply</p>	<p>Applications are through UAC at uac.edu.au/equity.</p> <p>If you are a school leaver, you also need to submit an application for Sydney Scholars to the University. The Sydney Scholars application can be found at sydney.edu.au/scholarships/undergraduate/year12/sydney-scholars-award.shtml.</p>
<p>For details of Equity Scholarships at USYD</p>	<p>sydney.edu.au/scholarships/undergraduate/year12/equity.shtml</p>
<p>Other information</p>	<p>Commencing students wishing to apply for University-owned Accommodation Scholarships should also apply for on-campus housing at sydney.edu.au/campus-life/accommodation.html by 1 December 2017. Further information about Accommodation Scholarships can be found on the above Equity Scholarships link.</p>

University of Technology Sydney

<p>Introduction</p>	<p>The University of Technology Sydney (UTS) recognises the financial challenges that many students face and is committed to providing financial assistance to support students who are undertaking study to reach their educational goals.</p> <p>UTS provides a number of Equity Scholarships to a diverse range of applicants from low socio-economic backgrounds and those who demonstrate financial hardship through the UAC Equity Scholarship.</p> <p>In addition to financial hardship, UTS also considers educational barriers such as membership of a specific equity group and/or significant adverse personal circumstances:</p> <ul style="list-style-type: none"> ■ rural or regional background ■ sole parent responsibilities ■ carer responsibilities ■ long-term medical condition/disability or ongoing effects of abuse ■ Indigenous Australian ■ refugee background. <p>The main source of financial assistance that UTS provides to students is the Diversity Access Scholarship, with approximately 600 scholarships awarded each year. Further information is available at uts.edu.au/das.</p> <p>Applicants who are not in receipt of a means-tested income support payment may be considered in cases of exceptional financial hardship if they are able to provide relevant supporting documentation.</p>
<p>How to apply</p>	<p>Applications are through UAC at uac.edu.au/equity.</p> <p>UTS recognises that a student's circumstances may change over the course of their study and therefore students are required to update their information with UAC if their financial situation changes.</p> <p>Students must reapply for consideration for an Equity Scholarship each year.</p> <p>uts.edu.au/future-students/scholarships</p>
<p>For details of Equity Scholarships at UTS</p>	<p>Students may also be eligible for other Equity Scholarships. Some scholarships that will be on offer in 2018 include:</p> <ul style="list-style-type: none"> ■ University wide: Diversity Access Scholarship, The Gradwell Brungs Scholarship, Vice Chancellor's Merit Scholarship ■ Business: Peter and Sharon Ivany Scholarship ■ Engineering and Information Technology: WJ and LM Sinclair Scholarship, Linden Little Equity Scholarship, Eleanor Dunn Scholarship, John Hughes Memorial Scholarship, Women in Engineering Equity Scholarship, CallidusCloud and Intech Scholarship in Information Technology, the Westpac Bicentennial Young Technologist Scholarship ■ Law: Law Equity Scholarship, Ezekiel Solomon Scholarship, Eric Dreikurs Scholarship ■ Arts and Social Sciences: Faculty of Arts & Social Sciences Undergraduate Student Merit Scholarship ■ Jumbunna Institute for Indigenous Education & Research: Laurie Cowled Scholarship, UTS Council Indigenous Scholarship. <p>For more information about the full range of Equity Scholarships available at UTS, contact the UTS Scholarships Office. Refer to page 14 for contact details.</p>

University of Wollongong

<p>Introduction</p>	<p>The University of Wollongong (UOW) recognises that accessing tertiary education can be an expensive undertaking, and in response offer a comprehensive range of scholarships for new commencing students.</p> <p>UOW Equity Scholarships provide assistance to students who are experiencing social and/or financial disadvantage who might not otherwise have the opportunity to attend university.</p> <p>Equity Scholarships on offer at UOW include, but are not limited to:</p> <ul style="list-style-type: none"> ■ UOW Equity Scholarships ■ UOW Mature Aged Scholarships ■ UOW General Residential Scholarships ■ Living and Learning Partners Residential Scholarships ■ Learning and Development Scholarships ■ In2uni Scholarships ■ Indigenous Commonwealth Scholarships.
<p>How to apply</p>	<p>Applications are through UAC at uac.edu.au/equity.</p>
<p>For details of Equity Scholarships at UOW</p>	<p>scholarships.uow.edu.au/scholarships/listing</p>
<p>Other information</p>	<p>Applicants must be commencing study in 2018 as a first year undergraduate student at the University of Wollongong, with no previous enrolment at UOW.</p> <p>Part-time students will be considered if they are able to demonstrate that exceptional circumstances prevent them from studying full-time.</p> <p>UOW will generally award scholarships to students who demonstrate multiple disadvantages under the following criteria:</p> <ul style="list-style-type: none"> ■ carer responsibilities ■ english language difficulty ■ financial hardship ■ Indigenous Australian ■ long-term medical condition/disability or ongoing effects of abuse ■ regional or remote disadvantage ■ sole parent responsibilities.

UNSW Sydney

<p>Introduction</p>	<p>UNSW's 2025 Strategy aims to provide ongoing support to students from disadvantaged and under-represented groups, Indigenous students and low socio-economic background students. Our Scholarship program offers over 200 Equity Scholarships and bursaries to assist students to undertake a full-time degree program at UNSW.</p> <p>Equity Scholarships are open to local and international students who will be commencing or are currently enrolled in a UNSW undergraduate or postgraduate coursework program.</p> <p>When awarding Equity Scholarships, UNSW may consider factors such as:</p> <ul style="list-style-type: none"> ■ financial hardship ■ regional or remote disadvantage ■ carer or sole parent responsibilities ■ sole parent responsibilities ■ long-term medical condition/disability or ongoing effects of abuse ■ refugee status ■ Indigenous Australian. <p>Most Institution Equity Scholarships offered by UNSW are for the minimum duration of the program. To continue receiving these scholarships students must maintain good academic standing each semester.</p>
<p>How to apply</p>	<p>Applications are through UAC at uac.edu.au/equity.</p> <p>In addition to completing the application through UAC, some applicants may be required to submit an application through the UNSW Scholarship Application online or the UAC Educational Access Scheme. For more information visit the UNSW Scholarship website at scholarships.unsw.edu.au.</p>
<p>For details of Equity Scholarships at UNSW Sydney</p>	<p>scholarships.unsw.edu.au</p>
<p>Other information</p>	<p>In 2018 UNSW will be participating in multiple Equity Scholarship offer rounds through the year. For more details visit the UNSW Scholarships website.</p>

Western Sydney University

<p>Introduction</p>	<p>Western Sydney University has a proud tradition of broadening access to education for the residents of Western Sydney. One of its main features is a multi-campus teaching base which ensures higher education is both accessible and responsive to their work, family and lifestyle commitments.</p>
<p>How to apply</p>	<p>Applications are through UAC at uac.edu.au/equity.</p>
<p>For details of Equity Scholarships at WS</p>	<p>westernsydney.edu.au/scholarships</p>

Merit-based scholarships

In addition to ES, institutions may also offer merit-based scholarships to prospective and current students.

Unlike ES, which are awarded to students experiencing financial and/or other forms of educational disadvantage, merit-based scholarships are awarded to applicants on a range of criteria such as:

- school examination results
- academic excellence
- Australian Tertiary Admission Rank (ATAR)
- course/faculty of study
- personal achievements such as:
 - leadership
 - creativity
 - self-motivation
 - communication skills
 - outstanding ability in sport.

To find out more about merit-based scholarships, visit the institutions' websites. You need to apply directly to individual institutions for merit-based scholarships.

Other UAC resources

Publications

- UAC Guide
- UAC International booklet
- All About UAC for Year 11 and 12 Students
- University Entry Requirements for Year 10 Students
- Educational Access Schemes (EAS)
- Schools Recommendation Schemes (SRS)
- All About the ATAR and Applying for Uni for Students and Parents
- UAC News (e-newsletter)
- Directions (e-newsletter)
- Steps 2 Study for non-Year 12 applicants
- Report on the Scaling of the NSW Higher School Certificate
- Calculating the Australian Tertiary Admissions Rank in NSW – A Technical Report

Online

UAC offers a range of online resources on its website. Visit uac.edu.au/media-hub/videos and uac.edu.au/schoolink for more details.

ATAR

- All About Your ATAR (YouTube video)
- ATAR Facts and Myths (PowerPoint presentation)

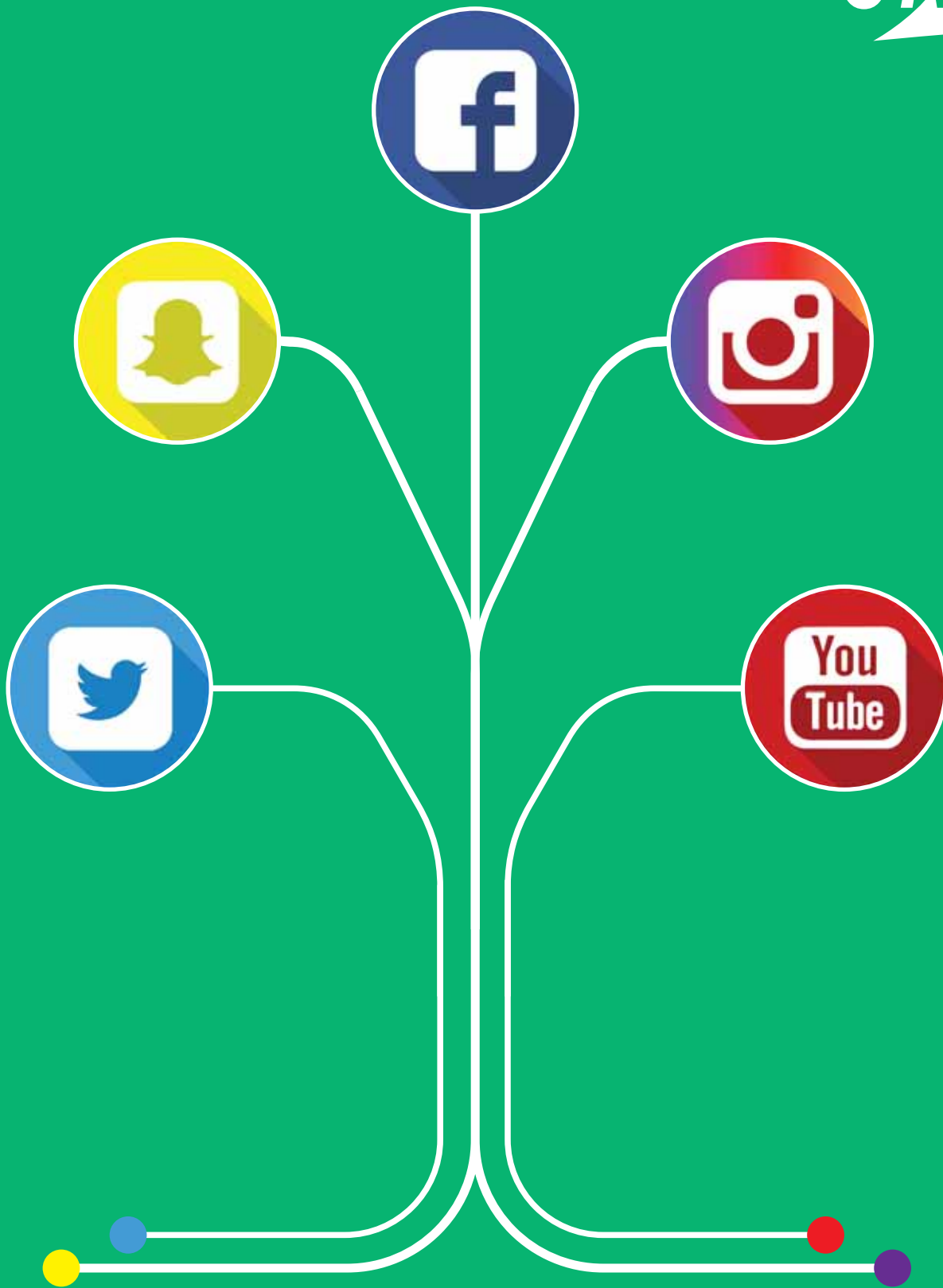
Year 10

- A Walk Through the Year 10 Booklet (PowerPoint presentation)
- Choosing HSC Courses – Facts and Myths (PowerPoint presentation)

Year 12

- Applying to Uni: It's Easy if You Know What to Do (PowerPoint presentation)
- How to Apply Through UAC Undergraduate: Australian Year 12 Students (YouTube video)
- How to Apply Through UAC International: Australian Year 12 or IB in Australia (YouTube video)

UAC



Connect with us @uacinfo

Equity Scholarships 2017–18

Published July 2017

Printer: Finsbury Green, Thebarton, SA

© 2017 Universities Admissions Centre (NSW & ACT) Pty Ltd
ACN 070 055 935 ABN 19 070 055 935

UAC and individual contributing institutions are the owners of the copyright in this publication.

Apart from any fair dealing for the purpose of private study, criticism or review, or otherwise as permitted under the *Copyright Act 1968*, no part may be reproduced by any process without UAC's written permission. Enquiries should be addressed to the Managing Director, UAC.

UAC has no objection to secondary schools and tertiary institutions reproducing or using the publication provided it is for use only within their own institution and this copyright statement is included.

If the document isn't reproduced in full, sections shouldn't be copied out of context where information could be incomplete and/or misleading.

Schools and tertiary institutions must ensure that this information is not transmitted to any other person or body without prior permission from UAC.

This publication is available on UAC's website.

About this publication

Equity Scholarships 2017–18 provides information about applying for Equity Scholarships through UAC, details of the scholarships available and scholarship criteria and conditions.

Cover image

Kate Barrett

Australian International School Singapore

Religious Harmony (Graphic Design)

'The design of a mandala is visually appealing and absorbs the mind. The balancing of visual elements symbolises unity and harmony. My work looks at the beauty and diversity in religions. I have focused on Christianity, Buddhism and Islam and have been influenced by Aboriginal culture and artmaking practices. These religions are the most populated, representing the sometimes tenuous relationship between cultures. My works are meant to inspire unity by shedding light on the beautiful elements of religion. I used symmetrically balanced designs that trap the viewer with their sheer scale, intricacies and mesmerising, pulsating colours.' Kate Barrett

ARTEXPRESS

ARTEXPRESS is an annual series of exhibitions of outstanding works selected from the NSW Higher School Certificate examination in Visual Arts. ARTEXPRESS is a joint project of the NSW Department of Education and Communities and the NSW Education Standards Authority. The artworks are on display at the Art Gallery of New South Wales, Hazelhurst Regional Gallery and Arts Centre, The Armory, at Sydney Olympic Park, Campbelltown Arts Centre and regional galleries throughout NSW.

Important information

Disclaimer

While UAC and the institution authors of this publication have used their best endeavours to ensure that information and analyses of information contained in this publication are correct at the time of printing, any use or reliance whatsoever on the publication by any person is that person's responsibility and UAC and the institution authors of this publication disclaim any responsibility or liability in relation to that use or reliance.

UAC and the institution authors reserve the right to change their processes, scholarships, schemes, content or the method of presentation of any unit of study, or to withdraw any unit or course of study on offer or to impose limitations on enrolments in any unit or course of study.

Advertising disclaimer

UAC does not necessarily endorse any product or service that may be advertised in this publication.

Fees and charges

All UAC fees and charges are in Australian dollars and include 10 per cent GST. UAC fees and charges are not refundable under any circumstances, except as required by law.

Times

Times indicated in this publication are Sydney time.

UAC Privacy Policy

The Universities Admissions Centre (NSW & ACT) Pty Ltd (UAC) recognises the importance of protecting personal information and is bound by the NSW State Information Protection Principles¹, the Australian Privacy Principles² and the NSW Health Privacy Principles³.

Details of UAC's Privacy Policy are available at uac.edu.au/general/privacy.shtml. Also refer to UAC declarations which are set out in our publications, online at uac.edu.au/general/legal.shtml or within our applications.

UAC collects personal information and, in some circumstances, information regarding your health, or information about someone other than yourself, for the purpose of processing your application for admission to tertiary institutions. UAC will only collect information for lawful purposes related to its function. You may seek access to personal information about you collected by UAC.

The type of personal information UAC holds includes your contact details (name, address, telephone number, email address), date of birth, gender, citizenship, educational achievements, professional qualifications, employment experience, examination results, information related to your health or the health of a family member and your Australian Tertiary Admission Rank (ATAR).

If you are providing personal information about someone other than yourself, you should tell them about UAC's Privacy Policy, which can be found on UAC's website at uac.edu.au/general/privacy.shtml.

If you are a NSW Higher School Certificate student, your Year 12 results will be held, along with Year 12 results from other states and territories in Australia, in an archive database at UAC. If you are eligible for an Australian Tertiary Admission Rank (ATAR) or a Limited ATAR, these will also be held in the database. Your results, including your ATAR if you are eligible, will be held in similar archives at tertiary admissions centres in other states in Australia. Results held in these archives will only be accessed by the relevant tertiary admission centre if you initiate an application for tertiary study through that centre, or if you submit an application for tertiary study directly with an institution participating in that centre.

Any questions regarding privacy at UAC should be forwarded in writing to: The Managing Director, UAC, Locked Bag 112, Silverwater NSW 2128.

¹ In the *Privacy and Personal Information Protection Act 1998 (NSW)*.

² In the *Privacy Act 1988 (Cth)*.

³ In the *Health Records and Information Privacy Act 2002 (NSW)*.

2017 edition

Universities Admissions Centre (NSW & ACT) Pty Ltd

Quad 2, 6 Parkview Drive

Sydney Olympic Park NSW 2127

Locked Bag 112, Silverwater NSW 2128

1300 ASK UAC (1300 275 822)

from mobiles: (02) 9752 0200

from overseas: +61 2 9752 0200

uac.edu.au

ABN 19 070 055 935 ACN 070 055 935

